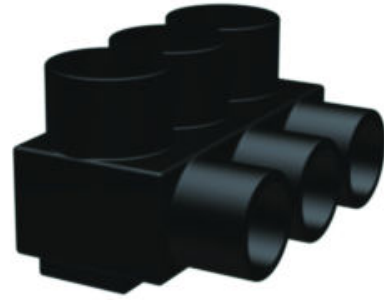




**1PL2/06, UV Rated Black, 1-sided,
6-port, #14-2/0 AWG**

By Burndy
Catalog # [1PL2/06](#)

UV Rated Plastisol Covered Al Distribution Connectors, 1-Sided
Entry, 6 Ports, #14 - 2/0 AWG, 600 V, 3/16" Hex.



Features

- UV Rated Covering over AL6061-T6 aluminum body saves time, lowering installation costs and eliminates taping
- Oxide inhibitor pre-installed inhibits moisture and contaminants from entering the contact area
- Range-taking capability reduces the number of connectors necessary to carry in inventory

General

Catalog Number	1PL2/06
Connector Type	Multi Tap
Hex Key	3/16
Installation Torque	120 in-lb
Recommended in-lb	
Insulation	Y
Insulation Type	Plastisol
Material	Aluminum
Material - Hardware	Aluminum
Number Of Ports	6
Physical Attribute - Number of Screws	6
Plated	N
Plating Type	Unplated
Temperature Rating	194° F
Trade Name	UNITAP™
UPC	781810286876
UPC 12 Digit	7818102868766

Dimensions

Dimension - Height fraction	1.375 in
Dimension - Height inch	1.38 in
Dimension - L Length Overall mm	107 mm
Dimension - Length Overall inch	4.20 in
Dimension - Screw Size inch	7/16
Dimension - Width inch	1.31 in
Dimension - Width mm	33 mm

Electrical Ratings

Voltage - Maximum	600 V
-------------------	-------

Conductor Related

Conductor - AL Str Size	14 AWG;12 AWG;10 AWG;9 AWG;8 AWG;7 AWG;6 AWG;5 AWG;4 AWG;3 AWG;2 AWG;1 AWG;1/0 ;2/0 AWG
Conductor - AL Str Size Range	14 AWG - 2/0 AWG
Conductor - Copper Str Size	14 AWG;12 AWG;10 AWG;9 AWG;8 AWG;7 AWG;6 AWG;5 AWG;4 AWG;3 AWG;2 AWG;1 AWG;1/0 ;2/0 AWG
Conductor - Copper Str Size Range	14 AWG - 2/0 AWG
Conductor Size	14-2/0 AWG
Conductor Type	<ul style="list-style-type: none">• AL C Str-Size• CU C Str-Size

Certifications And Compliance

Certification - CSA Approved	No
Certification - ETL	No
Certification - UL Listed Direct Burial	No
Certification - UL Recognized	No
Certification - cULus	No
Standards - RoHS Compliance Status	CM
UL Listed	Yes

Logistics

Minimum Pack Quantity	10
-----------------------	----

Product Assets

- [Catalogs - UNITAP™ Products](#)
- [Catalogs - BURNDY Master Catalog - Full Line BURNDY Catalog](#)
- [Catalogs - BURNDY Master Catalog - Section A - Mechanical](#)
- [Customer Notices - Prop 65 Notice](#)
- [Interactive Catalog - BURNDY Full-Line Digital Catalog](#)
- [Product Cross Section Image\(s\) - BUR_PL_LineArt](#)
- [Sales Drawings - SD214514-09](#)
- [Specifications - BURNDY_1PL206_Specsheet](#)
- [Specifications - 1PL2/06](#)
- [Specifications - 1PL2/06 Specification Sheet](#)



A Hubbell brand