

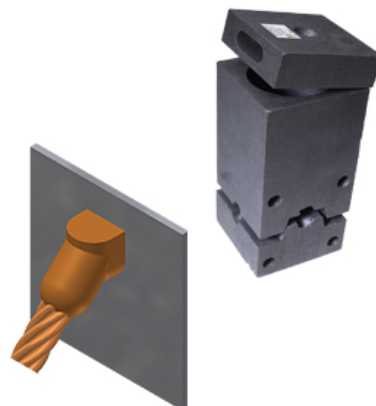


M-588 Exothermic Mold

By Burndy

Catalog # [600405880000](#)

M-588: CS-3 Exothermic mold #2 Stranded Run to Vertical Steel, using #45 Weld Metal Cartridge



Features

- Made from high quality graphite
- Molds light from the top at any angle, reducing splatter, and prolonging mold life
- EZ Lite lid reduces emissions by 50% or more and points exhaust away from the user

General

Catalog Number	600405880000
Material	Graphite
Type	Molds

UPC

781810587287

Logistics

Carton Quantity	1
Pallet Quantity	600

Product Assets

[Installation Manuals - thermOweld EZ Lite Remote Ignition Instructions - 000034696005](#)
[Installation Manuals - thermOweld EZ Lite Remote 2.0 Ignition Instructions - 00003469600](#)
[Specifications - 600405880000](#)