

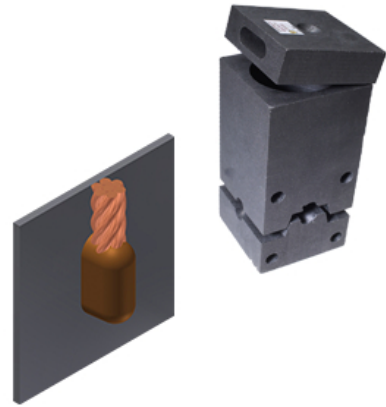


## M-1641 Exothermic Mold

By Burndy

Catalog # [600416410000](#)

M-1641: CS-7 Exothermic mold 2/0 Stranded Run to Vertical Steel, using #150 Weld Metal Cartridge



### Features

- Made from high quality graphite
- Molds light from the top at any angle, reducing splatter, and prolonging mold life
- EZ Lite lid reduces emissions by 50% or more and points exhaust away from the user

### General

Catalog Number	600416410000
Material	Graphite
Type	Molds
UPC	781810615553

### Logistics

Carton Quantity	1
Pallet Quantity	600

### Product Assets

- [Installation Manuals - thermOweld EZ Lite Remote Ignition Instructions - 000034696005](#)
- [Installation Manuals - thermOweld EZ Lite Remote 2.0 Ignition Instructions - 00003469600](#)
- [Specifications - 600416410000](#)
- [Specifications - 6000000000000](#)