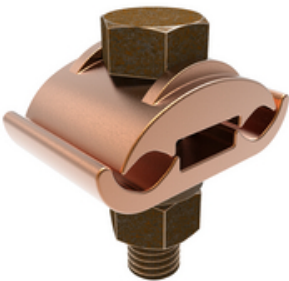




GC2626, Mechanical Grounding Connector, 2 Cables to Bar

By Burndy
Catalog # [GC2626](#)

Mechanical Grounding Connector, 2 Cables to 1/4" Thick Bar, 4 AWG (Sol)-2/0 AWG (Str).



Application

For Joining A Wide Range Of Two Parallel Copper Cables, Direct Burial In Concrete Or Ground

General

EU RoHS Indicator	Yes
Installation Torque	240 lb-in
Recommended in-lb	
Material	Copper
Material Type - Screw	DURIUM™ Silicon Bronze
Physical Attribute - Screw Type	Hexagonal Bolt
Plated	N
Plating Type	Unplated
Sub Brand	MECHANICAL CONNECTOR
Type	GC
UPC	781810231661
UPC 12 Digit	7818102316611

Dimensions

Dimension - Height inch	1.74 in
Dimension - L Length Overall mm	25 mm
Dimension - Length Overall inch	1.00 in
Dimension - Width inch	1.57 in
Dimension - Width mm	40 mm
Dimensions	1 in x 1.57 in x 1.74 in
Height	1.74 in
Length	1 in
Width	1.57 in

Conductor Related

Conductor - Copper Solid Size	4 AWG;3 AWG;2 AWG;1 AWG;1/0 AWG;2/0 AWG
Conductor - Copper Solid Size Range	4 AWG-2/0 AWG
Conductor - Copper Str Size	4 AWG;3 AWG;2 AWG;1 AWG;1/0 ;2/0 AWG
Conductor - Copper Str Size Range	4 AWG - 2/0 AWG

Certifications And Compliance

Certification - CSA Approved	No
Certification - ETL	No
Certification - UL Listed Direct Burial	Yes
Certification - UL Recognized	No
Certification - cULus	No
Industry Standard(s)	UL467
Standards - Industry Standards Met	UL467
Standards - RoHS Compliance Status	EX
UL Listed	Yes

Logistics

Minimum Pack Quantity	1
-----------------------	---

Product Assets

- [3D Models - GC2626_MODEL-IGES](#)
- [3D Models - GC2626_MODEL-STEP](#)
- [3D Models - GC2626_MODEL-PDF](#)
- [Catalogs - Full Line BURNDY Catalog](#)
- [Customer Notices - Prop 65 Notice](#)
- [Product Cross Section Image\(s\) - BUR_GC_Lineart](#)
- [Sales Drawings - SC..091659-01](#)



A proud member of the Hubbell Family.