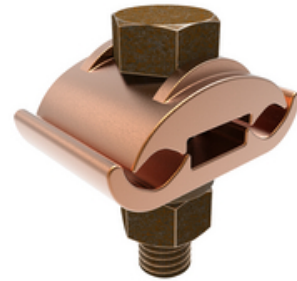




GC3434, Mechanical Grounding Connector, 2 Cables to Bar

By Burndy
Catalog # [GC3434](#)

Mechanical Grounding Connector, 2 Copper Cables to 1/4" Thick Bar, 300 kcmil - 500 kcmil, 1/2" Stud.



Application

For Joining A Wide Range Of Two Parallel Copper Cables, Direct Burial In Concrete Or Ground

General

EU RoHS Indicator	Yes
Installation Torque Recommended in-lb	480 lb-in
Material	Copper
Material Type - Screw	DURIUM™ Silicon Bronze
Physical Attribute - Screw Type	Hexagonal Bolt
Plated	N
Plating Type	Unplated
Sub Brand	MECHANICAL CONNECTOR
Type	GC
UPC	781810231753
UPC 12 Digit	7818102317533

Dimensions

Dimension - Height inch	2.82 in
Dimension - L Length Overall mm	41 mm
Dimension - Length Overall inch	1.62 in
Dimension - Width fraction	2-5/9 in
Dimension - Width inch	2.56 in
Dimension - Width mm	65 mm
Dimensions	1.62 in x 2.56 in x 2.82 in
Height	2.82 in
Length	1.62 in
Width	2.56 in

Conductor Related

Conductor - Copper Solid Size Range	300 KCMIL - 500 KCMIL
Conductor - Copper Str Size	300 kcmil;350 kcmil;400 kcmil;450 kcmil;500 kcmil
Conductor - Copper Str Size Range	300 kcmil - 500 kcmil

Certifications And Compliance

Certification - CSA Approved	No
Certification - ETL	No
Certification - UL Listed Direct Burial	Yes
Certification - UL Recognized	No
Certification - cULus	No
Industry Standard(s)	UL467
Standards - Industry Standards Met	UL467
Standards - RoHS Compliance Status	EX
UL Listed	Yes

Logistics

Minimum Pack Quantity	1
-----------------------	---

Product Assets

[3D Models - GC3434_MODEL-IGES](#)
[3D Models - GC3434_MODEL-PDF](#)
[3D Models - GC3434_MODEL-STEP](#)
[Catalogs - Full Line BURNDY Catalog](#)
[Customer Notices - Prop 65 Notice](#)
[Product Cross Section Image\(s\) - BUR_GC_Lineart](#)
[Sales Drawings - SC..091659-01](#)



A proud member of the Hubbell Family.

©2024 Hubbell Incorporated. All rights reserved.
BRDY-GC3434-SPEC-EN | REV 5/2024