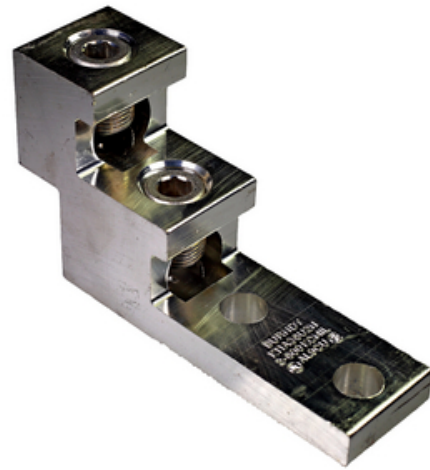




K11A36U2N, 1/2" diameter stud holes spaced 1-3/4" on center (NEMA-spacing), 600 Volt Rated, Aluminum, Tin plated

By Burndy
Catalog # [K11A36U2N](#)

1/2" diameter stud holes spaced 1-3/4" on center (NEMA-spacing), 600 Volt Rated, Aluminum, Tin plated.



Features

- AL9CU Dual Rated for both copper and aluminum conductor
- Listed to UL Wire Connector Standard UL486A-486B
- 1/2" diameter stud holes spaced 1-3/4" on center (NEMA-spacing)
- 600 Volt Rated
- Range Taking conductor port

Application

Terminate multiple conductors onto equipment pads, panel boards, or switchgear

General

Connector Type	Stacked
Construction Material - Main	Aluminum
EU RoHS Indicator	Contact Manufacturer
Finish Type	Tin-Plated
Insulation	N
Material	Aluminum
Sub Brand	Terminal
Type	K-A-U2N
UPC	781810670149

Dimensions

Dimension - Bolt Size fraction	1/2
Dimensions	5.34 in x 1.50 in x 3.00 in
Height	3 in
Length	5.34 in
Width	1.5 in

Conductor Related

Conductor Size	2 AWG-600 KCMIL
----------------	-----------------

Certifications And Compliance

Certification - CSA Approved	Yes
------------------------------	-----

Logistics

Minimum Pack Quantity	1
-----------------------	---

Product Assets

[Catalogs - Full Line BURNDY Catalog](#)
[Customer Notices - Prop 65 Notice](#)
[Sales Drawings - 50094864](#)



A proud member of the Hubbell Family.

©2024 Hubbell Incorporated. All rights reserved.
BRDY-K11A36U2N-SPEC-EN | REV 5/2024