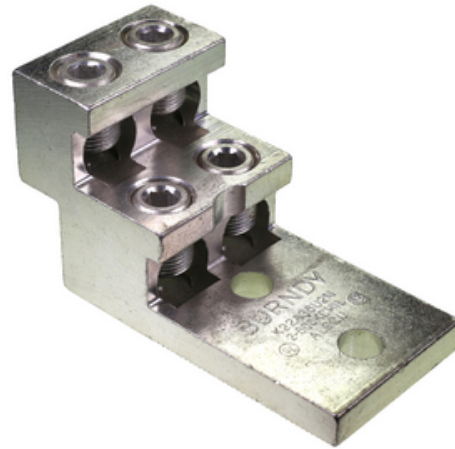




K22A36U2N, AL Universal Terminal, 2-Hole, 1/2" Stud, 1-3/4" NEMA Spacing

By Burndy
Catalog # [K22A36U2N](#)



Aluminum Universal Terminal, 2 Hole, 1/2" diameter stud holes spaced 1-3/4" on center (NEMA-spacing), tin plated

Features

- AL9CU Dual Rated for both copper and aluminum conductor
- Listed to UL Wire Connector Standard UL486A-486B
- 1/2" diameter stud holes spaced 1-3/4" on center (NEMA-spacing)
- 600 Volt Rated
- Range Taking conductor port

Application

Terminate multiple conductors onto equipment pads, panel boards, or switchgear

General

Connector Type	Stacked
Construction Material - Main	Aluminum
EU RoHS Indicator	Yes
Material	Aluminum
Plated	Y
Plating Type	Tin - Electro Plated
Temperature Rating	194
Trade Name	N
Type	Bolted Lugs & Terminals
UPC	781810670156
UPC 12 Digit	7818106701566

Dimensions

Dimension - Bolt Size fraction	1/2
Dimension - Hole Size mm	0 mm
Dimension - L Length Overall mm	0 mm
Dimension - Thread Size	-
Dimension - Width mm	0 mm
Dimensions	5.34 in x 2.47 in x 3.00 in
Height	3 in
Length	5.34 in
Width	2.47 in

Electrical Ratings

Rating - Minimum Voltage	600
Voltage Rating	600 V

Conductor Related

Conductor Type	<ul style="list-style-type: none"> • AL C Str-Size • CU C Str-Size
----------------	--------------------------------------------------------------------------------------------

Certifications And Compliance

Certification - CSA Approved	Yes
Certification - ETL	No
Certification - UL Recognized	N
Certification - cULus	N
Industry Standard(s)	UL 486A-486B
Standards - Industry Standards Met	UL 486A-486B
Standards - RoHS Compliance Status	EX
UL Listed	Yes

Logistics

Minimum Pack Quantity	1
-----------------------	---

Product Assets

[Catalogs - Full Line BURNDY Catalog](#)
[Customer Notices - Prop 65 Notice](#)
[Sales Drawings - 50094865](#)



A proud member of the Hubbell Family.

