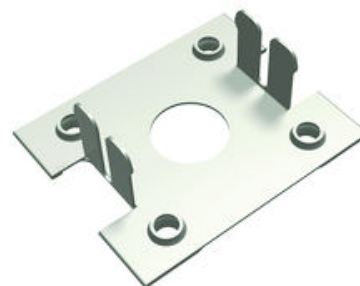


WEEB-DMC, WEEB Top Clamp Washer, .86 IN L, .71 IN W , 0.25 IN hole size, Rigid

By Burndy
Catalog # [WEEB-DMC](#)



WEEB® Washer Electrical Equipment Bond.

Features

- Made from corrosion resistant 304 stainless steel for outstanding durability and performance
- Eliminates the need for surface preparation and oxide inhibitor
- Detailed manual specifying proper hardware, torque, and mounting information is available upon request
- UL467 Recognized for grounding and bonding equipment
- Custom grounding and bonding solutions available upon request

Application

WEEB washers offer a simple, low cost method to bond any non-conductive coated surfaces together reducing time, labor costs and the amount of copper wiring. WEEB's patented teeth pierce through most non-conductive coatings and embed into the underlying metal creating a bonding connection between the mounting surface and coated metal component that it is installed on or between.

General

Catalog Number	WEEB-DMC
Item Type	3A
Material	304 Stainless Steel
UPC	781810537473
UPC 12 Digit	7818105374733

Dimensions

Dimension - Thread Size -

Certifications And Compliance

Certification - CSA Approved	N
Certification - ETL	Y
Certification - UL Recognized	Y
Certification - cULus	N
Certified Listed	UL2703 Recognized
Industry Standard(s)	UL2703 Recognized
Standards - RoHS Compliance	CM
Status	
UL Listed	Yes

Logistics

Carton Quantity 10000

Product Assets

- [3D Models - WEEB-DMC_MODEL-IGES](#)
- [3D Models - WEEB-DMC_MODEL-STEP](#)
- [3D Models - WEEB-DMC_MODEL-PDF](#)
- [Brochures - WEEB Washer Guide and WEEB Washer Theory](#)
- [Catalogs - BURNDY Master Catalog - Full Line BURNDY Catalog](#)
- [Catalogs - BURNDY Master Catalog - Section E4 - Wiley Grounding](#)
- [Customer Notices - Prop 65 Notice](#)
- [Interactive Catalog - BURNDY Full-Line Digital Catalog](#)
- [Product Cross Section Image\(s\) - BUR_WEEB_Lineart](#)
- [Sales Drawings - 50000489](#)
- [Specifications - WEEB-DMC](#)