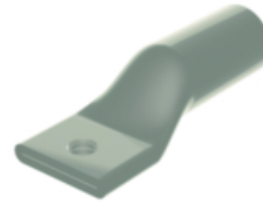


# Compression Terminal

By Burndy  
Catalog # YA26A8

AL Terminal, AL9CU, Internal Chamfer, Tin Plated, Prefilled PENETROX™ A13, End Cap, UL/CSA, 90°C, Up to 35kV, Color Code, Die Index.



## Application

Wire Termination

## General

Color Code	Olive
Connector Type	DUAL RATED
Die Index	297
Feature - Barrel Style	Chamfered
Feature - Barrel Type	Standard
Finish Type	Tin-Plated
Material	ALUMINUM
Physical Attribute - Number of Holes	1
Physical Attribute - Tongue Type	Standard
Plated	Y
Plating Type	Tin - Electro Plated
Temperature Rating	194
Trade Name	HYLUG™
UPC	781810178157
UPC 12 Digit	7818101781577

## Dimensions

Dimension - B Length fraction	1-3/16 in
Dimension - B Length inch	1.17 in
Dimension - Bolt Hole Size inch	0.66 in
Dimension - Bolt Size fraction	5/8
Dimension - Bolt Size inch	0.63
Dimension - D inch	1.36 in
Dimension - Hole Size fraction	5/8
Dimension - Hole Size inch	0.69
Dimension - Hole Size mm	17.5 mm
Dimension - L Length Overall mm	77 mm
Dimension - Length Overall inch	3.03 in
Dimension - N inch	0.63 in
Dimension - Outside Diameter inch	0.67 in
Dimension - Pad Width inch	1.03 in
Dimension - Stud Size fraction	5/8
Dimension - Thread Size	5/8 in
Dimension - Z inch	0.73 in
Physical Attribute - Tongue Angle	Straight

## Electrical Ratings

Voltage - Maximum	35000
Voltage Rating	35 kV

## Conductor Related

Conductor - AL Str Size	2/0 AWG
Conductor - AL Str Size Range	2/0 AWG
Conductor - Copper Str Size	2/0 AWG
Conductor - Copper Str Size Range	2/0 AWG
Conductor - Material	ALUMINUM / COPPER
Conductor Size	2/0 AWG
Conductor Type	CODE
Wire Size	2/0 AWG

## Certifications and Compliance

Certification - CSA Approved	Yes
Certification - ETL	No
Certification - UL Recognized	No
Certification - cULus	No
Industry Standard(s)	UL 486A-486B
Standards - Industry Standards Met	UL 486A-486B
Standards - RoHS Compliance Status	CM
UL Listed	Yes

## Logistics

Carton Quantity	50
Minimum Pack Quantity	1
Pallet Quantity	12000

## Product Assets

[Customer Notices - Prop 65 Notice](#)  
[Installation Manuals - Aluminum Installation Instructions](#)  
[Sales Drawings - SD073935-01](#)



---

**A proud member of the Hubbell Family.**

©2023 Hubbell Incorporated. All rights reserved.  
BRDY-YA26A8-SPEC-EN | REV 8/2023