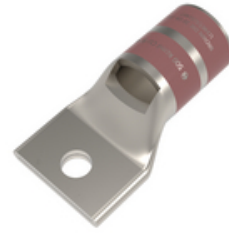




# YA34L6, 500 kcmil, Copper, 1-hole, 1/2 Stud, Standard Barrel, Inspection Window

By Burndy  
Catalog # [YA34L6](#)



500 kcmil CU, One Hole, 1/2 Stud Size, Standard Barrel, Inspection Window, Internal Chamfer, Tin Plated, UL/CSA 90° Up to 35kV, BROWN Color Code, 20 or 299 Die Index.

## Application

Wire Termination

## General

Color Code	Brown
Connector Type	STANDARD BARREL
Die Index	20
EU RoHS Indicator	Yes
Feature - Barrel Style	<ul style="list-style-type: none"><li>• Chamfered</li><li>• Skived</li></ul>
Feature - Barrel Type	Standard
Finish Type	Tin-Plated
Material	COPPER
Physical Attribute - Number of Holes	1
Physical Attribute - Tongue Type	Standard
Plated	Y
Plating Type	Tin - Electro Plated
Sub Brand	HYLUG
Trade Name	HYLUG™
Type	Standard Barrel, Tin Plated
UPC	781810506226

## Dimensions

Dimension - B Length fraction	1-1/4 in
Dimension - B Length inch	1.27 in
Dimension - Bolt Hole Size inch	0.52 in
Dimension - Bolt Size fraction	1/2
Dimension - Bolt Size inch	0.5
Dimension - D inch	1.08 in
Dimension - Hole Size fraction	1/2
Dimension - Hole Size inch	0.53
Dimension - Hole Size mm	13.5 mm
Dimension - L Length Overall mm	79 mm
Dimension - Length Overall inch	3.12 in
Dimension - N inch	0.53 in
Dimension - Outside Diameter inch	1.06 in
Dimension - Pad Width inch	1.55 in
Dimension - Strip Length inch	1-7/16
Dimension - Stud Size fraction	1/2

## Electrical Ratings

Voltage - Maximum	35000
Voltage Rating	35 kV

## Conductor Related

Conductor - Copper DLO Size Range	N/A
Conductor - Copper Str Size	500 KCMIL
Conductor - Copper Str Size Range	500 kcmil
Conductor - Material	COPPER
Conductor Size	500 KCMIL
Conductor Type	CODE

## Certifications And Compliance

Certification - CSA Approved	Yes
Certification - ETL	No
Certification - UL Recognized	No
Certification - cULus	No
Industry Standard(s)	UL 486A-486B
Standards - Industry Standards Met	UL467
Standards - RoHS Compliance Status	CM
UL Listed	Yes

## Logistics

Carton Quantity	6
Minimum Pack Quantity	1

## Product Assets

[3D Models - YA34L6\\_MODEL-IGES](#)  
[3D Models - YA34L6\\_MODEL-PDF](#)  
[3D Models - YA34L6\\_MODEL-STEP](#)  
[Catalogs - Full Line BURNDY Catalog](#)  
[Customer Notices - Prop 65 Notice](#)  
[Installation Manuals - Copper Code Standard Terminals Tooling and Installation Instructions](#)  
[Sales Drawings - SD079848](#)  
[Video - HYDENT Compression Terminal Overview Video](#)

Dimension - Stud Size inch	1/2
Dimension - Z (inch)	0.55 in
Physical Attribute - Tongue Angle	Straight



**A proud member of the Hubbell Family.**

©2024 Hubbell Incorporated. All rights reserved.  
BRDY-YA34L6-SPEC-EN | REV 5/2024