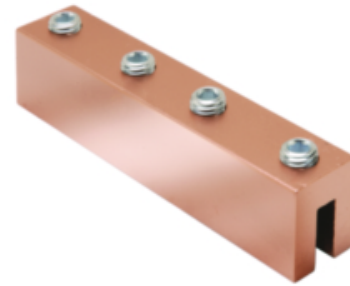




YGIBW343382N Structural Steel Compression Grounding Connector

By Burndy
Catalog # YGIBW343382N



GROUNDLINK™ Connector for Structural Steel Angled (Type YGIBS) or Parallel Beam (Type YGIBW); Accommodates: #2 AWG - 500 kcmil, I-Beam Flange Thickness: .250" - .338".

General

Connector Type	Tap
I Beam Style	Wide Flange Beam (Flange Parallel)
Material	Copper
Plated	N
Plating Type	Unplated
Trade Name	GROUNDLINK™
Type	Taps
UPC	781810039373
UPC 12 Digit	7818100393733

Dimensions

Dimension - B Length fraction	6 in
Dimension - B Length inch	6.00 in
Dimension - I Beam Thickness Range inch	0.250;0.275;0.300;0.312
Dimension - I Beam Thickness inch	0.250" - 0.338"
Dimension - L Length Overall mm	152 mm
Dimension - Length Overall inch	6.00 in

Conductor Related

Conductor - Copper Str Size	250 kcmil;300 kcmil;350 kcmil;400 kcmil;450 kcmil;500 kcmil
Conductor - Copper Str Size Range	250 kcmil-500 kcmil
Conductor Type	CU C Str-Size

Certifications and Compliance

Certification - CSA Approved	Yes
Certification - ETL	No
Certification - UL Listed Direct Burial	Yes
Certification - UL Recognized	No
Certification - cULus	No
Industry Standard(s)	<ul style="list-style-type: none">UL467IEEE 837
Standards - Industry Standards Met	<ul style="list-style-type: none">UL467IEEE 837
Standards - RoHS Compliance Status	CM
UL Listed	Yes

Logistics

Carton Quantity	6
Minimum Pack Quantity	2
Pallet Quantity	696

Product Assets

[Customer Notices - Prop 65 Notice](#)
[Sales Drawings - sd208416-03](#)



A proud member of the Hubbell Family.

©2023 Hubbell Incorporated. All rights reserved.
BRDY-YGIBW343382N-SPEC-EN | REV 8/2023