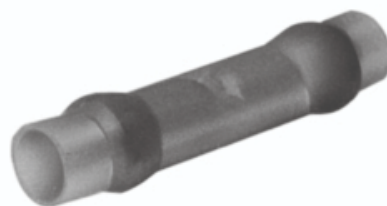


YSE14H, Nylon Splice For 16 - 14 AWG

By Burndy
Catalog # YSE14H



Cu Butt Splice, Smooth Funnel Entry, W/InspWindow, AN16-14, 600 V, 1.36" L, Nylon Insul, Integral bbl, Tin Plated, Blue, 600 Volts Max.

Features

- Manufactured from tin plated, seamless electrolytic copper tubing with integral barrel/insulation grip - providing maximum conductivity and tensile strength along with excellent cable support and strain relief
- Split heavy wall insulation grip for stronger insulation grip and strain relief
- Smooth funnel entry for easy wire insertion
- Transparent nylon insulation for easy wire insertion

Application

For Splicing Aircraft And Commercial Flexible Cables

General

Catalog Number	YSE14H
Color Code	Blue
Connector Type	Seamless Butt Splice
Construction Material - Main	Copper
EU RoHS Indicator	Yes
Insulation	Y
Insulation Type	Nylon
Material	Copper
Plated	Y
Plating Type	Tin
Sub Brand	INSULINK
Temperature Rating	105
Trade Name	INSULINK™
Type	YSE-H
UPC	781810803868
UPC 12 Digit	7818108038688

Dimensions

Dimension - B Length fraction	3/13 in
Dimension - B Length inch	0.23 in
Dimension - Diameter Max Size inch	0.15 in
Dimension - Length Overall inch	1.36 in
Dimension - Outside Diameter inch	0.15 in
Dimension - Strip Length inch	11/32

Electrical Ratings

Voltage - Maximum 600 V

Conductor Related

Conductor - Copper Str Aircraft Size	AN 16;AN 14
Conductor - Copper Str Aircraft Size Range	AN 16-AN 14
Conductor - Copper Str Size	16;14
Conductor - Copper Str Size Range	16-14
Conductor Size	16 - 14 AWG
Conductor Type	CU C Str-Size

Certifications And Compliance

Buy American Compliant	Contact Manufacturer
Certification - CSA Approved	Yes
Certification - ETL	No
Certification - UL Recognized	No
Certification - cULus	No
Industry Standard(s)	UL486
Standards - Industry Standards Met	UL486
Standards - RoHS Compliance	CM
Status	
UL Listed	Yes

Logistics

Carton Quantity	1000
Minimum Pack Quantity	1000
Pallet Quantity	99999

Product Assets

[3D Models - YSE14H_MODEL-STEP](#)

[3D Models - YSE14H_MODEL-PDF](#)

[3D Models - YSE14H_MODEL-IGES](#)

[Catalogs - BURNDY Master Catalog - Full Line BURNDY Catalog](#)

[Catalogs - BURNDY Master Catalog - Section B - Small](#)

[Compression](#)

[Customer Notices - Prop 65 Notice](#)

[Interactive Catalog - BURNDY Full-Line Digital Catalog](#)

[Product Cross Section Image\(s\) - BUR_YSE-HN_LineArt](#)

[Sales Drawings - 50094194](#)



A Hubbell brand

©2024 Hubbell Incorporated. All rights reserved
BRDY-YSE14H-SPEC-EN | REV 8/2024