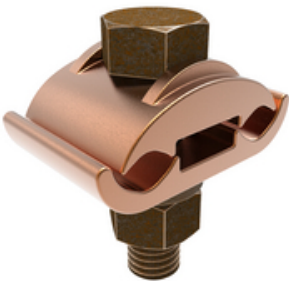




**GC2929, Mechanical Grounding Connector, 2 Cables to 1/4" Thick Bar, 2/0 AWG Sol-250 kcmil, 1/2" Stud**

By Burndy  
Catalog # [GC2929](#)



Mechanical Grounding Connector, 2 Cables to 1/4" Thick Bar, 2/0 AWG (Sol) -250 kcmil, 1/2" Stud,Torque:480 lb in.

**Application**

For Joining A Wide Range Of Two Parallel Copper Cables, Direct Burial In Concrete Or Ground

**General**

Catalog Number	GC2929
EU RoHS Indicator	Yes
Installation Torque	480 lb-in
Recommended in-lb	
Material	Copper
Material Type - Screw	DURIUM™ Silicon Bronze
Physical Attribute - Screw Type	Hexagonal Bolt
Plated	N
Plating Type	Unplated
Sub Brand	MECHANICAL CONNECTOR
Type	GC
UPC	781810231722
UPC 12 Digit	7818102317222

**Dimensions**

Dimension - Height inch	2.32 in
Dimension - L Length Overall mm	32 mm
Dimension - Length Overall inch	1.25 in
Dimension - Width fraction	2 in
Dimension - Width inch	2.04 in
Dimension - Width mm	52 mm
Dimensions	1.25 in x 2.04 in x 2.32 in
Height	2.32 in
Length	1.25 in
Width	2.04 in

**Conductor Related**

Conductor - Copper Solid Size	2/0 AWG;3/0 AWG;4/0 AWG
Conductor - Copper Solid Size Range	2/0 AWG - 250 KCMIL
Conductor - Copper Str Size	2/0 AWG;3/0 AWG;4/0 AWG;250 kcmil
Conductor - Copper Str Size Range	2/0 AWG - 250 kcmil

**Certifications And Compliance**

Certification - CSA Approved	No
Certification - ETL	No
Certification - UL Listed Direct Burial	Yes
Certification - UL Recognized	No
Certification - cULus	No
Industry Standard(s)	UL467
Standards - Industry Standards Met	UL467
Standards - RoHS Compliance Status	EX
UL Listed	Yes

**Product Assets**

[3D Models - GC2929\\_MODEL-PDF](#)  
[3D Models - GC2929\\_MODEL-STEP](#)  
[3D Models - GC2929\\_MODEL-IGES](#)  
[Catalogs - Full Line BURNDY Catalog](#)  
[Catalogs - Section E2 - Mechanical Grounding](#)  
[Customer Notices - Prop 65 Notice](#)  
[Product Cross Section Image\(s\) - BUR\\_GC\\_Lineart](#)  
[Sales Drawings - SC..091659-01](#)



A proud member of the Hubbell Family.