



## YF0216ID, Covered Ferrule For 2 AWG

By Burndy

Catalog # [YF0216ID](#)

Elect Cu Single Insul Wire Ferrules, Smooth Funnel Entry, 2 AWG, 1.18" L, Tin Plated, Red, For use on Cu Cond.

### Application

For Use On Copper Conductor

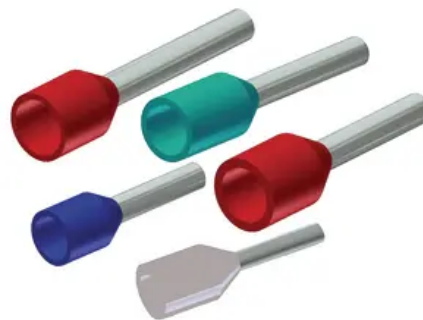
### General

Catalog Number	YF0216ID
Connector Type	End Termination
EU RoHS Indicator	Yes
Insulation	Y
Material	Copper
Plated	Y
Plating Type	Tin - Electro Plated
Sub Brand	FERRULES
Type	Bootlace Ferrule
UPC	781810483589
UPC 14 Digit GTIN	00781810483589

### Dimensions

Dimension - D inch	0.34 in
Dimension - D1 inch	0.33 in
Dimension - D2 inch	0.50 in
Dimension - Length Side A inch	1.18 in
Dimension - Length Side B inch	0.63 in

### Conductor Related



Conductor - Copper Solid Size	2 AWG
Conductor - Copper Str Size	2 AWG
Conductor Size	2 AWG
Conductor Type	<ul style="list-style-type: none"><li>• CU C Solid-Size</li><li>• CU C Str-Size</li></ul>

### Certifications And Compliance

Certification - CSA Approved	No
Certification - ETL	No
Certification - UL Recognized	No
Certification - cULus	No
Standards - RoHS Compliance	CM
Status	
UL Listed	No

### Product Assets

[Catalogs - BURNDY Master Catalog - Full Line BURNDY Catalog](#)  
[Customer Notices - Prop 65 Notice](#)  
[Interactive Catalog - BURNDY Full-Line Digital Catalog](#)  
[Product Cross Section Image\(s\) - BUR\\_YF-I\\_LineArt](#)  
[Sales Drawings - 10099178](#)  
[Specifications - YF0216ID Specification Sheet French](#)  
[Specifications - BURNDY\\_YF0216ID\\_Specsheet](#)  
[Specifications - YF0216ID Specification Sheet English](#)



A Hubbell brand

©2025 Hubbell Incorporated. All rights reserved  
BRDY\_CA-YF0216ID-SPEC-EN | REV 4/2025