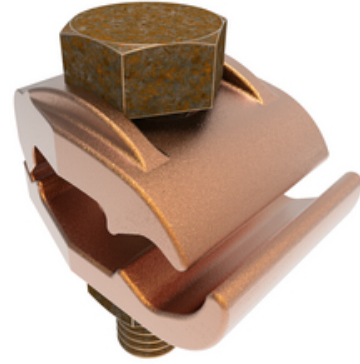




# GB26, Mechanical Grounding Connector, Cable to Bar

By Burndy  
Catalog # [GB26](#)

Mechanical Grounding Connector, Cable to 1/4" Thick Bar, 4 AWG (Sol)-2/0 AWG (Str), 3/8" Stud, 1-1/2 IN Width.



## Application

For Copper Cable To Bar, Direct Burial Cable

## General

Catalog Number	GB26
EU RoHS Indicator	Yes
Installation Torque Recommended in-lb	240 lb-in
Material	Copper Alloy
Material Type - Screw	DURIUM™ Silicon Bronze
Physical Attribute - Screw Type	Hexagonal Bolt
Plated	N
Plating Type	Unplated
Sub Brand	MECHANICAL CONNECTOR
Type	GB
UPC	781810231210
UPC 12 Digit	7818102312100

## Dimensions

Dimension - Height inch	1.74 in
Dimension - L Length Overall mm	24 mm
Dimension - Length Overall inch	0.94 in
Dimension - Width fraction	1-3/7 in
Dimension - Width inch	1.42 in

## Conductor Related

Conductor - Copper Solid Size	4 AWG;3 AWG;2 AWG;1 AWG;1/0 AWG;2/0 AWG
Conductor - Copper Solid Size Range	4 AWG-2/0 AWG
Conductor - Copper Str Size	4 AWG;3 AWG;2 AWG;1 AWG;1/0 ;2/0 AWG
Conductor - Copper Str Size Range	4 AWG-2/0 AWG

## Certifications And Compliance

Certification - CSA Approved	No
Certification - ETL	No
Certification - UL Listed Direct Burial	Yes
Certification - UL Recognized	No
Certification - cULus	No
Industry Standard(s)	UL467
Standards - Industry Standards Met	UL467
Standards - RoHS Compliance Status	EX
UL Listed	Yes

## Product Assets

[3D Models - GB26\\_MODEL-STEP](#)  
[3D Models - GB26\\_MODEL-PDF](#)  
[3D Models - GB26\\_MODEL-IGES](#)  
[Catalogs - Full Line BURNDY Catalog](#)  
[Catalogs - Section E2 - Mechanical Grounding](#)  
[Customer Notices - Prop 65 Notice](#)  
[Product Cross Section Image\(s\) - BUR\\_GB\\_Lineart](#)  
[Sales Drawings - sc091657-01](#)



A proud member of the Hubbell Family.

©2024 Hubbell Incorporated. All rights reserved.  
BRDY\_MX-GB26-SPEC-EN | REV 6/2024