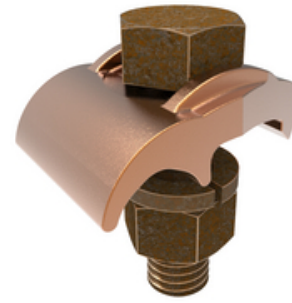




GBM29, Mechanical Grounding Connector, Cable to Bar

By Burndy
Catalog # [GBM29](#)



Mechanical Grounding Connector, Cable to 1/4" Thick Bar, 2/0 AWG (Sol) -250 kcmil, 1/2" Stud.

Application

For Copper Cable To Bar, Direct Burial Cable

General

Catalog Number	GBM29
EU RoHS Indicator	Yes
Installation Torque Recommended in-lb	480 lb-in
Material	Copper Alloy
Material Type - Screw	DURIUM™ Silicon Bronze
Physical Attribute - Screw Type	Hexagonal Bolt
Plated	N
Plating Type	Unplated
Sub Brand	MECHANICAL CONNECTOR
Type	GBM
UPC	781810231456
UPC 12 Digit	7818102314566

Dimensions

Dimension - Height inch	2.07 in
Dimension - L Length Overall mm	32 mm
Dimension - Length Overall inch	1.25 in
Dimension - Width fraction	1-5/6 in
Dimension - Width inch	1.84 in
Dimension - Width mm	47 mm

Conductor Related

Conductor - Copper Solid Size	2/0 AWG;3/0 AWG;4/0 AWG
Conductor - Copper Solid Size Range	2/0 AWG - 250 KCMIL
Conductor - Copper Str Size	2/0 AWG;3/0 AWG;4/0 AWG;250 kcmil
Conductor - Copper Str Size Range	2/0 AWG-250 kcmil

Certifications And Compliance

Certification - CSA Approved	No
Certification - ETL	No
Certification - UL Listed Direct Burial	Yes
Certification - UL Recognized	No
Certification - cULus	No
Industry Standard(s)	UL467
Standards - Industry Standards Met	UL467
Standards - RoHS Compliance Status	EX
UL Listed	Yes

Product Assets

[3D Models - GBM29_MODEL-IGES](#)
[3D Models - GBM29_MODEL-PDF](#)
[3D Models - GBM29_MODEL-STEP](#)
[Catalogs - Full Line BURNDY Catalog](#)
[Catalogs - Section E2 - Mechanical Grounding](#)
[Customer Notices - Prop 65 Notice](#)
[Product Cross Section Image\(s\) - BUR_GBM_Lineart](#)
[Sales Drawings - sc091658-01](#)



A proud member of the Hubbell Family.

©2024 Hubbell Incorporated. All rights reserved.
BRDY_MX-GBM29-SPEC-EN | REV 6/2024