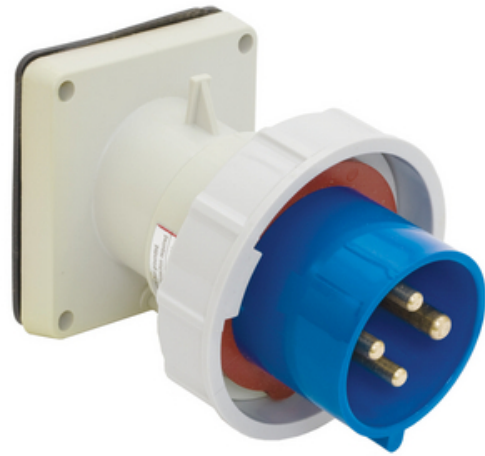




Heavy Duty Products, IEC Pin and Sleeve Devices, Industrial Grade, Male Flanged Inlet, 16A 220-240V, Watertight

By Bryant
Catalog # 316B6W



Heavy Duty Products, IEC Pin and Sleeve Devices, Industrial Grade, Male Flanged Inlet, 16A 220-240V, 2-Pole 3-Wire Grounding, Terminal Screw, Blue, Watertight

Application

High Ampacity Watertight Connections

General

Color	Blue
Environmental Conditions	Watertight
Insulation	Insulated Body
Item Type	Single Flanged
Material	Composite
Material - Mounting Hardware	Screw Mounting
Number Of Poles	2-Pole
OEM Brand Name	Hubbell Bryant
Series	Watertight - IP67
Temperature Rating	Maximum Continuous: 75° C; Minimum Continuous: -40° C w/o impact
Type	Inlet
UPC	781786250192

Dimensions

Display Size	Standard Sized Product
--------------	------------------------

Electrical Ratings

Amperage Rating	16 A
Connectivity	Pressure Terminal Screws
Current / Amperage Rating	16 A
Current Rating	16 A
Dielectric Strength	Withstands 3000V Minimum in
Voltage Rating	200-250 V
Voltage Rating Description	200-250V
Wattage	4000

Conductor Related

Number Of Wires	3-Wire
-----------------	--------

Product Assets

[Catalog Page - Bryant K-5 Catalog page](#)



A proud member of the Hubbell Family.

©2023 Hubbell Incorporated. All rights reserved.
BRY-316B6W-SPEC-EN | REV 5/2023