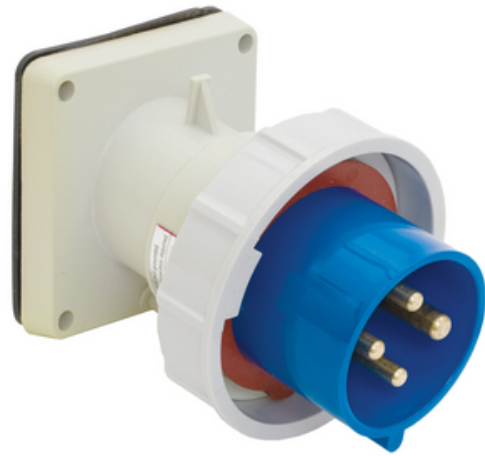




Heavy Duty Products, IEC Pin and Sleeve Devices, Industrial Grade, Male Flanged Inlet, 20A 250V AC, Watertight

By Bryant
Catalog # [320B6W](#)



Heavy Duty Products, IEC Pin and Sleeve Devices, Industrial Grade, Male Flanged Inlet, 20A 250V AC, 2-Pole 3-Wire Grounding, Terminal Screw, Blue, Watertight

Application

High Ampacity Watertight Connections

General

Color	Blue
Environmental Conditions	Watertight
Insulation	Insulated Body
Item Type	Single Flanged
Material	Composite
Material - Mounting Hardware	Screw Mounting
Number Of Poles	2-Pole
OEM Brand Name	Hubbell Bryant
Series	Watertight - IP67
Temperature Rating	Maximum Continuous: 75° C; Minimum Continuous: -40° C w/o impact
Type	Inlet
UPC	781786250277

Dimensions

Display Size Standard Sized Product

Electrical Ratings

Amperage Rating	20 A
Connectivity	Pressure Terminal Screws
Current / Amperage Rating	20 A
Current Rating	20 A
Dielectric Strength	Withstands 3000V Minimum in
Voltage Rating	250 VAC
Voltage Rating Description	250V AC
Wattage	5000

Conductor Related

Number Of Wires 3-Wire

Product Assets

[Catalog Page - Bryant K-4 Catalog page](#)



A proud member of the Hubbell Family.

©2023 Hubbell Incorporated. All rights reserved.
BRY-320B6W-SPEC-EN | REV 5/2023