



IEC Pin and Sleeve, Watertight Inlet, 32 A, 100-130 VAC

By Bryant
Catalog # [BRY332B4W](#)

Heavy Duty Products, IEC Pin and Sleeve Devices, Male, Inlet, 32 A 100-130 VAC, 2-POLE 3-WIRE, Yellow, Watertight

Features

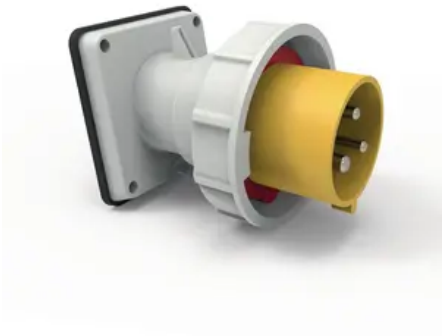
- IP67 environmental ratings
- Impact and corrosion resistant insulated non-metallic housing
- Sequential contact engagement to prevent a momentary over-voltage
- Color coded housings provide quick identification of mating devices
- Shrouded pins to protect from impact and abuse

Application

High Ampacity Connections

General

| | |
|--------------------------|---|
| Catalog Number | BRY332B4W |
| Color | Yellow |
| Environmental Conditions | IP67 |
| Ingress Protection | IP67 |
| Insulation | Insulated Body |
| Material | PBT |
| Mounting Type | Screw Mount |
| Number Of Poles | 2-POLE |
| Series | Watertight IP67 |
| Size | Standard |
| Temperature Rating | Maximum Continuous: 75° C; Minimum Continuous: -40° C w/o impact, -25° with impact. |
| Type | Inlet |



UPC 781786781139

Electrical Ratings

| | |
|----------------------------|--------------------|
| Amperage Rating | 32 A |
| Current / Amperage Rating | 32 A |
| Dielectric Strength | Withstand 3000V AC |
| Voltage - Maximum | 600 VAC |
| Voltage Rating | 100-130 VAC |
| Voltage Rating Description | 100-130 VAC |

Conductor Related

| | |
|-----------------|-------------------|
| Number Of Wires | 3-WIRE |
| Wire Size | #10 AWG to #8 AWG |

Certifications And Compliance

| | |
|----------------------|----------|
| Industry Standard(s) | VDE, CE |
| Nema Rating | Non-NEMA |

Logistics

| | |
|-----------------|----|
| Carton Quantity | 10 |
|-----------------|----|

Product Assets

- [Catalog Page - BRY K-4 Catalog Page](#)
- [Catalog Page - BRY K-5 Catalog Page](#)
- [Catalogs - Bryant Full Line Catalog](#)
- [Sales Drawings - M14036](#)
- [Specifications - BRYANT_BRY332B4W_spec](#)



A Hubbell brand