



# IEC Pin and Sleeve, Splash Proof Plug, 60/63 A, 347/600 VAC

By Bryant  
Catalog # [BRY560P5S](#)

Heavy Duty Products, IEC Pin and Sleeve Devices, Male, Plug, 60 A 347/600 VAC, 4-POLE 5-WIRE, Red, Splash Proof

## Features

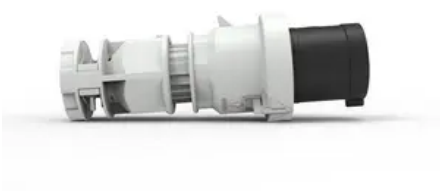
- IP44 environmental ratings
- Impact and corrosion resistant insulated non-metallic housing
- Sequential contact engagement to prevent a momentary over-voltage
- External strain relief
- Glandless water ingress protection

## Application

High Ampacity Connections

## General

Catalog Number	BRY560P5S
Color	Black
Environmental Conditions	IP44
Ingress Protection	IP44
Insulation	Insulated Body
Material	PBT
Mounting Type	Cord Mounted
Number Of Poles	4-POLE
Series	Splash Proof
Size	Standard
Temperature Rating	Maximum Continuous: 75° C; Minimum Continuous: -40° C w/o impact, -25° with impact.
Type	Plug
UPC	781786784635



## Electrical Ratings

Amperage Rating	60 A
Current / Amperage Rating	60 A
Dielectric Strength	Withstand 3000V AC
Voltage - Maximum	600 VAC
Voltage Rating	347/600 VAC
Voltage Rating Description	347/600 VAC

## Conductor Related

Number Of Wires	5-WIRE
Wire Size	#6 AWG to #4 AWG

## Certifications And Compliance

Industry Standard(s)	All constructions are UL Listed & cUL Listed, FileE14633, UL1686 Standard for Pin & Sleeve Configurations, VDE, CE
Nema Rating	Non-NEMA

## Logistics

Carton Quantity	5
-----------------	---

## Product Assets

- [Catalog Page - BRY K-6 Catalog Page](#)
- [Catalogs - Bryant Full Line Catalog](#)
- [Sales Drawings - M14031](#)
- [Specifications - BRYANT\\_BRY560P5S\\_spec](#)



A Hubbell brand