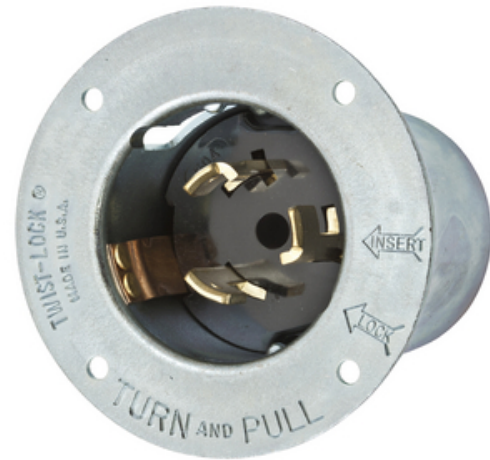




Locking Devices, Locking Devices, Industrial, Flanged Inlet, 50A 3-Phase Delta 250V AC, 3-Pole 4-Wire Grounding, Non- NEMA, Screw Terminal, Black

By Bryant
Catalog # [CS8375A](#)

Locking Devices, Industrial, Flanged Inlet, 50A 3-Phase Delta 250V AC, 3-Pole 4-Wire Grounding, Non- NEMA, Screw Terminal, Steel



Features

- Metallic flanged casing provides maximum strength and protection
- Thermoset interior provides superior heat resistance

Application

Extra Heavy Duty Industrial

General

Color	Metallic
Environmental Conditions	Indoor Dry Unless Protected By Additional Means
Insulation	Insulated Body
Item Type	Single Flanged Inlet
Material	Composite
Material - Mounting Hardware	Screw Mounting
Number Of Poles	3-Pole
OEM Brand Name	Hubbell Bryant
Style	Extra Heavy Duty
Temperature Rating	Maximum Continuous: 75° C; Minimum Continuous: -40° C w/o impact
Type	Flanged Inlet
UPC	781786253186

Dimensions

Dimensions	2.77 in x 3.50 in x 3.50 in
Display Size	Standard Sized Product
Height	3.50 in
Length	2.77 in
Width	3.50 in

Electrical Ratings

Amperage Rating	50 A
Connectivity	Pressure Terminal Screws
Current Rating	50 A
Dielectric Strength	Withstands 3000V Minimum in
Voltage Rating	3 Phase 250 VAC
Voltage Rating Description	3 Phase 250V AC

Conductor Related

Number Of Wires	4-Wire
Wire Size	#18 AWG to #8 AWG

Logistics

Carton Quantity	10
-----------------	----

Product Assets

[Catalog Page - Bryant H-21 Catalog page](#)
[Catalogs - Bryant Full Line Catalog](#)

Related Products

[CS8364 - Locking Devices, Industrial, Female Connector Body, 50A 3-Phase Delta 250V AC, 3-Pole 4-Wire Grounding, Non-NEMA, Screw Terminal, Black and White](#)
[7780 - Wallplates and Boxes, Weatherproof Covers, 1- Gang, 1\) 50A Locking Opening, Standard Size, Black Polycarbonate](#)



A proud member of the Hubbell Family.

©2023 Hubbell Incorporated. All rights reserved.
BRY-CS8375A-SPEC-EN | REV 7/2023