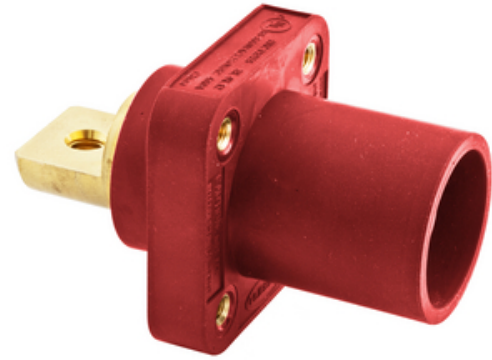




Heavy Duty Products, Single Pole Devices, Industrial Grade, Male Bus Receptacle, 300/400A 600V AC/DC, Single Conductor, Red

By Bryant
Catalog # [HBLMRBR](#)



Heavy Duty Products, Single Pole Devices, Industrial Grade, Male Bus Receptacle, 300/400A 600V AC/DC, Single Conductor, Red

General

Application	High Ampacity Connections
Catalog Number	HBLMRBR
Color	Red
EU RoHS Indicator	No
Environmental Conditions	Indoor Dry Unless Protected By Additional Means
Item Type	Flanged Single
Material	Thermoplastic
Material - Mounting Hardware	Screw Mounting
Number Of Poles	1-Pole
Performance	Electrical - Amperage Rating - 400A Maximum Electrical - Voltage Ratings - 600V AC Maximum 250V DC Maximum Environmental - Flammability - HB per UL94 or CSA 22.2. 0.17 Mechanical - Product Identification - Ratings are a permanent part of device Mechanical - Terminal Accommodation - #4 to 4/0 AWG
Series	Series 16
Style	Bus Bar Mount Male
Type	Receptacle
UPC	783585192581

Dimensions

Display Size	Standard Sized Product
--------------	------------------------

Electrical Ratings

Amperage Rating	400 A
Connectivity	Screw Terminals
Current / Amperage Rating	400 A
Current Rating	400 A
Phase	Single Phase
Voltage Rating Description	600V AC/DC
Wattage	240000

Conductor Related

Wire Size	#4 AWG to #4/0 AWG
-----------	--------------------

Certifications And Compliance

Industry Standard(s)	National Electric Code (NEC), ANSI/NFPA 70 UL and cUL Listed UL Enclosure Types 3R, 4X, 12
Nema Rating	Non-NEMA

Logistics

Carton Quantity	25
Pallet Quantity	1575

Product Assets

- [Catalog Page - WDK H-7 Catalog Page](#)
- [Catalogs - Bryant Full Line Catalog](#)
- [Catalogs - WDK Catalog Full 2024](#)
- [Literature - Single Pole Devices](#)



A Hubbell brand

©2024 Hubbell Incorporated. All rights reserved
BRY-HBLMRBR-SPEC-EN | REV 6/2024