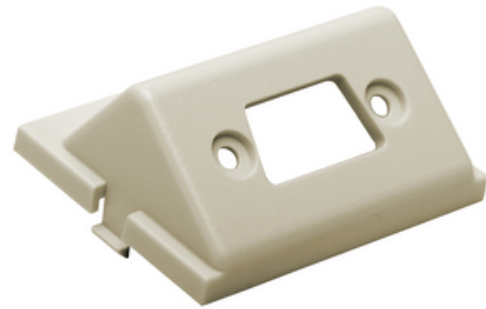




iStation Module, Angled, D Sub, Unloaded, 1.5-Unit, Electric Ivory

By Bryant
Catalog # [IMBDSA15EI](#)

iStation Module, Angled, D Sub, Unloaded, 1.5-Unit, Electric Ivory



Application

15/9 Pin/HDMI Angled Unloaded

General

| | |
|------------------------------|---|
| Contact | Beryllium Copper |
| EU RoHS Indicator | Yes |
| Environmental Conditions | Indoor Dry Unless Protected By Additional Means |
| Item Type | iSTATION Front-Loading Modules |
| Material - Mounting Hardware | Snap-On- Snap-Fit |
| Style | Angled |
| Temperature Rating | Per TIA |
| Type | HDMI |
| UPC | 662620291482 |

Dimensions

Display Size Standard Sized Product

Electrical Ratings

| | |
|--------------------|---------------------|
| Connectivity | Plug-N-Play |
| Contact Resistance | 100 Ohm |
| Withstand Voltage | 1000V RMS, 1414V DC |

Logistics

Carton Quantity 20

Product Assets

[Catalog Page - Bryant R-17 Catalog page](#)
[Catalogs - Bryant Full Line Catalog](#)



A proud member of the Hubbell Family.

©2023 Hubbell Incorporated. All rights reserved.
BRY-IMBDSA15EI-SPEC-EN | REV 7/2023