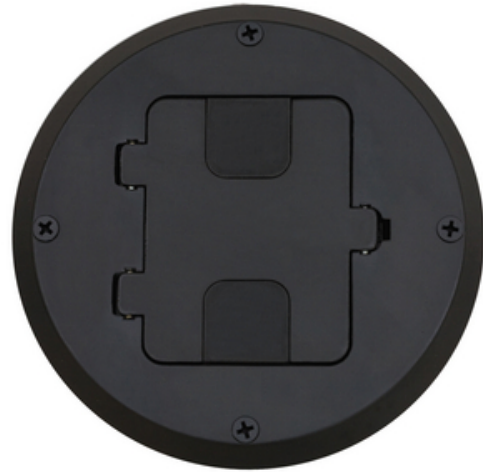




## Floor and Wall Boxes, Residential Floor Box Kit, Wood Floor Type, 1-Gang, Black

By Bryant  
Catalog # [RF515BK](#)

Floor and Wall Boxes, Residential Floor Box Kit, Wood Floor Type, 1-Gang, Black



### Features

- Pre-assembled flange and cover for fast installation
- Top screw fastening and side joist mounting provided
- Height accessible adjustments after the box is mounted

### General

EU RoHS Indicator	Yes
UPC	883778300196

### Logistics

Carton Quantity	10
-----------------	----

### Product Assets

[Catalog Page - Bryant P-4 Catalog page](#)  
[Catalogs - Bryant Full Line Catalog](#)

### Related Products

[RF515BR - Floor and Wall Boxes, Residential Floor Box Kit, Wood Floor Type, 1-Gang, Brass](#)  
[RF515CU - Floor Boxes, Wood Floor Box Kit, Copper](#)  
[RF515NI - Floor and Wall Boxes, Residential Floor Box Kit, Wood Floor Type, 1-Gang, Nickel](#)  
[RF515AL - Floor and Wall Boxes, Residential Floor Box Kit, Wood Floor Type, 1-Gang, Almond](#)  
[RF515BP - Floor and Wall Boxes, Residential Floor Box Kit, Wood Floor Type, 1-Gang, Brass Plated](#)



A proud member of the Hubbell Family.

©2023 Hubbell Incorporated. All rights reserved.  
BRY-RF515BK-SPEC-EN | REV 7/2023