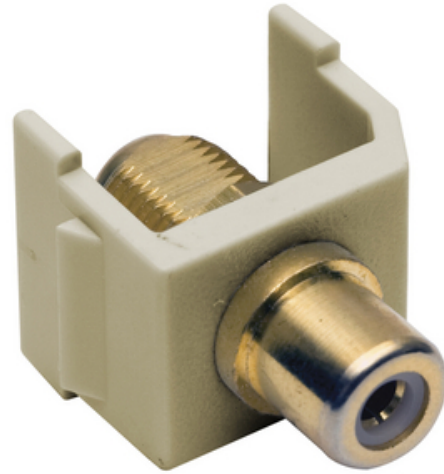




Connector, Snap-Fit, RCA to F-Coupler, Electric Ivory

By Bryant
Catalog # [SFRFGEI](#)

Connector, Snap-Fit, RCA to F-Coupler, Electric Ivory



Application

Snap-Fit RCA to F-Connector

General

| | |
|------------------------------|---|
| Contact | Beryllium Copper |
| EU RoHS Indicator | Yes |
| Environmental Conditions | Indoor Dry Unless Protected By Additional Means |
| Item Type | iSTATION RCA and F-Keystone Connectors |
| Material - Mounting Hardware | Snap-On- Snap-Fit |
| Style | RCA to F-Connector |
| Temperature Rating | Per TIA |
| Type | F-Type |
| UPC | 662620854458 |

Dimensions

Display Size Standard Sized Product

Electrical Ratings

| | |
|--------------------|---------------------|
| Connectivity | Female to Female |
| Contact Resistance | 100 Ohm |
| Withstand Voltage | 1000V RMS, 1414V DC |

Logistics

Carton Quantity 25

Product Assets

[Catalog Page - Bryant R-9 Catalog page](#)
[Catalogs - Bryant Full Line Catalog](#)



A proud member of the Hubbell Family.

©2023 Hubbell Incorporated. All rights reserved.
BRY-SFRFGEI-SPEC-EN | REV 7/2023