

## IEC Pin and Sleeve

30/32 A, 200-415 VAC, 4-POLE, 5-WIRE

## Connector Body

### Features

- IP67 environmental ratings
- Impact and corrosion resistant insulated non-metallic housing
- Sequential contact engagement to prevent a momentary over-voltage
- UL approved screwless terminations
- Glandless water ingress protection

### Ordering Information

| Description                             | Series          | Color | UPC Number   | Catalog Number   |
|---|-----------------|-------|--------------|------------------|
| Heavy Duty Products, IEC Pin and Sleeve | Watertight IP67 | Red   | 781786781740 | <b>BRY530C6W</b> |

### Listings

All constructions are UL Listed & cUL Listed  
FileE14633  
UL1686 Standard for Pin & Sleeve Configurations  
VDE, CE

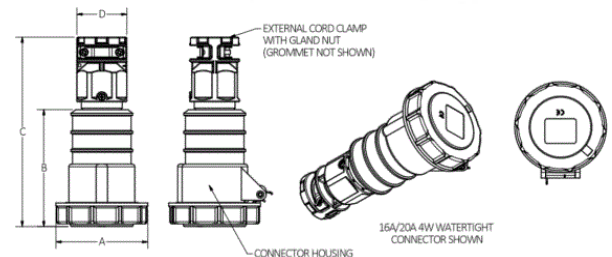
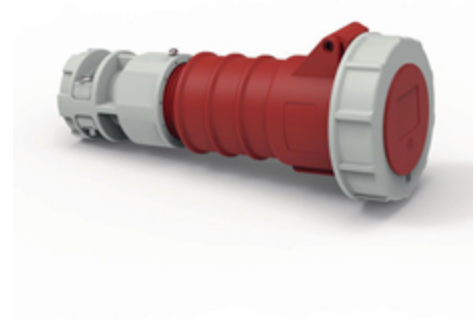
### Specifications

|             |                           |
|-------------|---------------------------|
| Application | High Ampacity Connections |
| Connection  | Screwless Spring          |
| Wire Size   | #10AWG to #8AWG           |
| Material    | PBT                       |
| Mounting    | Cord Mounted              |

### Performance

|                         |   |
|-------------------------|---|
| <b>Electrical</b>       |   |
| Dielectric Voltage      | Withstand 3000V AC  |
| Max. Working Voltage    | 600V AC RMS   |
| <b>Mechanical</b>       |   |
| Impact Resistance       | Per CSA C22.2 No. 182.1 / UL1682  |
| Product Identification  | Identification and ratings are marked on device housing                             |
| Terminal Identification | Terminals identified in accordance with North American and IEC conventions          |
| <b>Environmental</b>    |   |
| Flammability            | HB  |
| Ingress Protection      | IP67  |
| Moisture Resistance     | IEC 60309-1   |
| Temperature Rating      | Maximum Continuous: 75° C; Minimum Continuous: -40° C w/o impact, -25° with impact. |

# BRYANT®



### Online Resources

Customer Sales Drawings  
eCatalog

# BRYANT®