

# Raceway

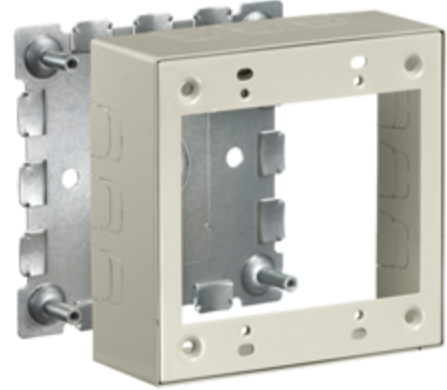
## Metal Raceway

### 2-Gang Standard Box

# BRYANT

#### Features

- For use with HBL500, HBL700 and HBL750 Series Raceway
- Hubbell Handi-Screw® eases installation by eliminating difficult to install long screws
- Rounded corners with no sharp edges
- One seam construction provides a “clean” look
- Box design allows standard wallplates to be mounted flush with virtually no perimeter profile exposed



#### Ordering Information

Description	Color	UPC Number	Catalog Number
2-Gang Standard Box	Ivory	783585423531	HBL57482IVA

#### Listings

UL Listed  
CSA Certified

#### Specifications

Height	4.54"
Width	4.64"
Length	1.75"

#### Online Resources

eCatalog

Dimensions in Inches (mm)

Bryant Electric • An affiliate of Hubbell Incorporated (Delaware) • 40 Waterview Drive • Shelton, CT 06484  
Phone (800) 323-2792 • Specifications subject to change without notice