

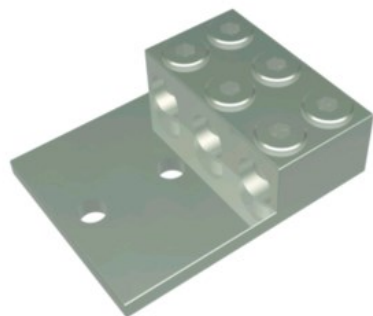
KK3A36U2N

by Burndy
Catalog ID: KK3A36U2N

Prop 65 Notice

Aluminum Universal Terminal, 3 Conductor, 2 Hole, 2 AWG (Str)-600 kcmil, 1/2" Stud, 1.75" Stud Hole Spacing, 6 Screws, Al/Cu Rated, Tin Plated.

Universal terminal, These dual-rated three conductor lugs are constructed from high strength aluminum alloy and electro tin-plated to provide low contact resistance



Product Details

General

Application	For Aluminum and Copper Conductors
Connector Type	Terminal
Material	Aluminum
Material - Hardware	Aluminum
Physical Attribute - Number of Holes	2
Plated	Y
Plating Type	Tin Plated
Sub Brand	UNIVERSAL TERMINAL
Type	Bolted Lugs & Terminals
UPC	781810601464

Dimensions

Dimension - Bolt Hole Size inch	0.56 in
Dimension - E Spacing between Holes fraction	1-3/4 in
Dimension - Height inch	1.52 in
Dimension - Hole Size fraction	9/16
Dimension - Hole Size inch	0.56 in
Dimension - Hole Size mm	14 mm
Dimension - L Length Overall mm	140 mm
Dimension - Length Overall inch	5.50 in
Dimension - N inch	0.63 in
Dimension - Pad Width inch	4.22 in
Dimension - Stud Size inch	0.56 in

Conductor Related

Conductor - AL Str Size	2 AWG;1 AWG;1/0 AWG;2/0 AWG;3/0 AWG;4/0 AWG;250 kcmil;266 kcmil;300 kcmil;336 kcmil;350 kcmil;397 kcmil;400 kcmil;450 kcmil;477 kcmil;500 kcmil;550 kcmil;556 kcmil;600 kcmil
Conductor - AL Str Size Range	2 Str. - 600 Kcmil
Conductor - Copper Str Size Range	2 Str. - 600 Kcmil

Conductor Type	<ul style="list-style-type: none"> • CU C Str-Size • AL C Str-Size
Number Of Wires	3

Certifications and Compliance

Certification - CSA Approved	Yes
Certification - ETL	No
Certification - UL Listed Direct Burial	No
Certification - UL Recognized	No
Certification - cULus	No
Industry Standard(s)	UL 486A-486B
Standards - Industry Standards Met	UL 486A-486B
Standards - RoHS Compliance Status	EX
UL Listed	Yes

Logistics

Minimum Pack Quantity	1
-----------------------	---

For further technical assistance, please contact us

BURNDY Headquarters
47 East Industrial Park Drive
Manchester, New Hampshire 03109

Customer Service Hours:
8 AM - 8 PM Eastern Monday-Friday
Emergency Service 24-hours/365 Days
Phone: 1-800-346-4175
1-603-647-5299 (International)