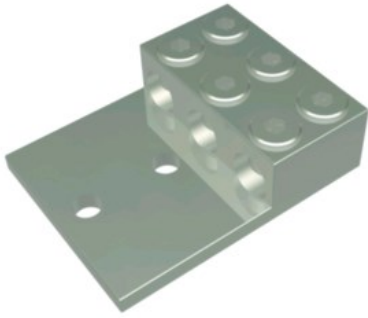


KK3A44U2N

by Burndy
Catalog ID: KK3A44U2N

Prop 65 Notice

Aluminum Universal Terminal, 3 Conductor, 2 Hole, 500-1000 kcmil, 1/2" Stud, 1.75" Stud Hole Spacing, 6 Screws, Al/Cu Rated, Tin Plated



Product Details

General

Connector Type	Terminal
Material	Aluminum
Material - Hardware	Aluminum
Physical Attribute - Number of Holes	2
Plated	Y
Plating Type	Tin Plated
Type	Bolted Lugs & Terminals
UPC	781810601488

Dimensions

Dimension - Bolt Hole Size inch	0.56 in
Dimension - E Spacing between Holes fraction	1-3/4 in
Dimension - Height inch	1.90 in
Dimension - Hole Size fraction	9/16
Dimension - Hole Size inch	0.56 in
Dimension - Hole Size mm	14 mm
Dimension - L Length Overall mm	157 mm
Dimension - Length Overall inch	6.19 in
Dimension - N inch	0.63 in
Dimension - Pad Width inch	4.79 in
Dimension - Stud Size inch	0.56 in

Conductor Related

Conductor - AL Str Size	500 kcmil;550 kcmil;556 kcmil;600 kcmil;636 kcmil;650 kcmil;700 kcmil;715 kcmil;750 kcmil;795 kcmil;800 kcmil;874 kcmil;900 kcmil;954 kcmil;1000 kcmil
Conductor - AL Str Size Range	500 - 1000 Kcmil
Conductor - Copper Str Size Range	500 - 1000 Kcmil
Conductor Type	<ul style="list-style-type: none"> • CU C Str-Size • AL C Str-Size
Number Of Wires	3

Certifications and Compliance

Certification - CSA Approved	Yes
Certification - ETL	No
Certification - UL Listed Direct Burial	No
Certification - UL Recognized	No
Certification - cULus	No
Industry Standard(s)	UL 486A-486B
Standards - Industry Standards Met	UL 486A-486B
Standards - RoHS Compliance Status	NC
UL Listed	Yes

Logistics

Minimum Pack Quantity	1
Pallet Quantity	12 EA

For further technical assistance, please contact us

BURNDY Headquarters

47 East Industrial Park Drive
Manchester, New Hampshire 03109

Customer Service Hours:

8 AM - 8 PM Eastern Monday-Friday
Emergency Service 24-hours/365 Days
Phone: 1-800-346-4175
1-603-647-5299 (International)