

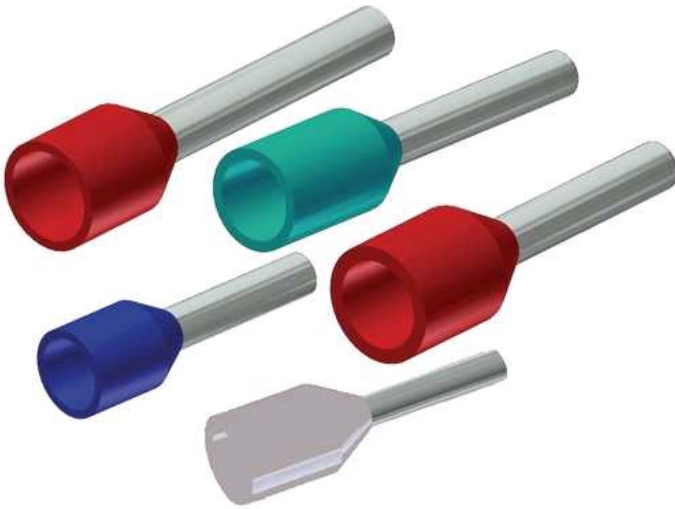
YF0618ID

by Burndy
Catalog ID: YF0618ID

Prop 65 Notice

Elect Cu Single Insul Wire Ferrules, Smooth Funnel Entry, 6 AWG, 1.10" L, Tin Plated, Blue, For use on Cu Cond.

Standard Product



Product Details

General

Color	Metallic
Construction	Cast
Insulation	Y
Item Type	Weatherproofing Covers
Knockouts	None
Material	Aluminum, Cast
Material - Mounting Hardware	Vertical Mounted
Number Of Outlets	50A 3 and 4-Wire
OEM Brand Name	Hubbell Bryant
Plating Type	Tin - Electro Plated
Sub Brand	FERRULES
Type	Weatherproof Cover
UPC	781810482728
UPC 12 Digit	7818104827288

Dimensions

Dimension - D1 inch	0.23 in
Dimension - D2 inch	0.35 in
Dimension - Length Side A inch	1.10 in
Dimension - Length Side B inch	0.71 in
Display Size	1-Gang

Conductor Related

Conductor - Copper Solid Size	6 AWG
Conductor - Copper Str Size	6 AWG

Conductor Type	<ul style="list-style-type: none">• CU C Solid-Size• CU C Str-Size
----------------	---

Certifications and Compliance

Certification - CSA Approved	No
Certification - UL Recognized	No
Standards - RoHS Compliance Status	CM
UL Listed	No

Logistics

Minimum Pack Quantity	100
-----------------------	-----

For further technical assistance, please contact us

BURNDY Headquarters

47 East Industrial Park Drive
Manchester, New Hampshire 03109

Customer Service Hours:

8 AM - 8 PM Eastern Monday-Friday
Emergency Service 24-hours/365 Days
Phone: 1-800-346-4175
1-603-647-5299 (International)