

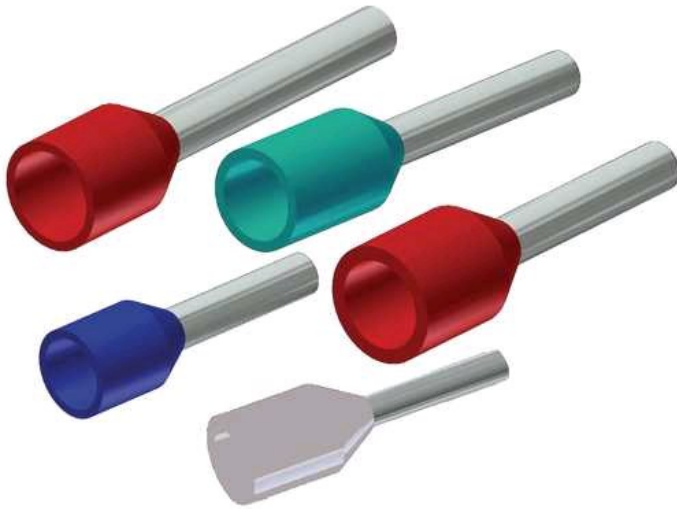
YF1410IT

by Burndy
Catalog ID: YF1410IT

Prop 65 Notice

Elect Cu Single Insul Wire Ferrules, Smooth Funnel Entry, 14 AWG, 0.69" L, Tin Plated, Gray, For use on Cu Cond.

Features: Ferrules Are Electrical Connectors Used To Terminate Stranded Wires, Creating A Quality, Reliable Connection By Ensuring Each Wire Strand Conducts Current When Properly Crimped, Especially Useful When Multiple Reconnections Could Be Necessary Within Terminal Blocks Or Other Similar Devices, No Breakage Of Wire Strands When Wire Is Bent, Under Stress Or In A Vibration Environment, Twin Ferrule Designs Allow Two Individual Stranded Conductors To Be Connected To The Same Termination, Most Beneficial In Jumpering Or Other Similar Applications, Both Styles (Single And Twin) Offer The Same Features And Benefits, The YF-TOOL Series Has Been Designed To Crimp Both The Bare (Type YF-UI) And Insulated (Type YF-I) Ferrules, Made Of Electrolytic Copper, Tin Plated, Smooth Funnel Entry To Make Wire Insertion Easier, Secure Contacting Even After Multiple Reconnections, Long-Term Contact Resistance, No Fraying Of Strands, No Breakage Of Wire Strands When Wire Is Bent, Under Stress Or In Vibration Environment, Rohs Compliant, Recommended Tooling: YF3206TOOL, YF2610TOOL, YF2214TOOL, YF2210TOOL, Series: T



Product Details

General

| | |
|--------------|-----------------------------|
| Application | For Use On Copper Conductor |
| Insulation | Y |
| Material | Copper |
| Plated | Y |
| Plating Type | Tin - Electro Plated |
| Sub Brand | FERRULES |
| Type | Bootlace Ferrule |
| UPC | 781810481684 |
| UPC 12 Digit | 7818104816844 |

Dimensions

| | |
|--------------------------------|---------|
| Dimension - D inch | 0.10 in |
| Dimension - D1 inch | 0.09 in |
| Dimension - D2 inch | 0.17 in |
| Dimension - Length Side A inch | 0.69 in |
| Dimension - Length Side B inch | 0.39 in |

Conductor Related

| | |
|-------------------------------|--|
| Conductor - Copper Solid Size | 14 AWG |
| Conductor - Copper Str Size | 14 AWG |
| Conductor Type | <ul style="list-style-type: none"> • CU C Solid-Size • CU C Str-Size |

Certifications and Compliance

| | |
|------------------------------------|----|
| Certification - CSA Approved | No |
| Certification - ETL | No |
| Certification - UL Recognized | No |
| Certification - cULus | No |
| Standards - RoHS Compliance Status | CM |
| UL Listed | No |

Logistics

| | |
|-----------------------|-----|
| Minimum Pack Quantity | 500 |
|-----------------------|-----|

For further technical assistance, please contact us

BURNDY Headquarters

47 East Industrial Park Drive
Manchester, New Hampshire 03109

Customer Service Hours:

8 AM - 8 PM Eastern Monday-Friday
Emergency Service 24-hours/365 Days
Phone: 1-800-346-4175
1-603-647-5299 (International)