

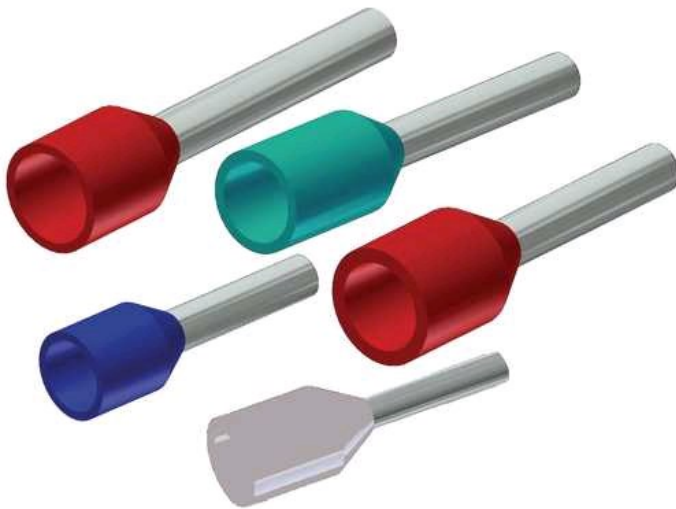
YF2210IW

by Burndy
Catalog ID: YF2210IW

Prop 65 Notice

Elect Cu Single Insul Wire Ferrules, Smooth Funnel Entry, 22 AWG, 0.63" L, Tin Plated, Orange, For use on Cu Cond.

Features: Ferrules Are Electrical Connectors Used To Terminate Stranded Wires, Creating A Quality, Reliable Connection By Ensuring Each Wire Strand Conducts Current When Properly Crimped, Especially Useful When Multiple Reconnections Could Be Necessary Within Terminal Blocks Or Other Similar Devices, No Breakage Of Wire Strands When Wire Is Bent, Under Stress Or In A Vibration Environment, Twin Ferrule Designs Allow Two Individual Stranded Conductors To Be Connected To The Same Termination, Most Beneficial In Jumping Or Other Similar Applications, Both Styles (Single And Twin) Offer The Same Features And Benefits, The YF-TOOL Series Has Been Designed To Crimp Both The Bare (Type YF-UI) And Insulated (Type YF-I) Ferrules, Made Of Electrolytic Copper, Tin Plated, Smooth Funnel Entry To Make Wire Insertion Easier, Secure Contacting Even After Multiple Reconnections, Long-Term Contact Resistance, No Fraying Of Strands, No Breakage Of Wire Strands When Wire Is Bent, Under Stress Or In Vibration Environment, Rohs Compliant, Series: W, Recommended Tooling: YF3206TOOL, YF2610TOOL, YF2214TOOL, YF2210TOOL



Product Details

General

Application	For Use On Copper Conductor
Insulation	Y
Material	Copper
Plated	Y
Plating Type	Tin - Hot Dipped
Sub Brand	FERRULES
Type	Bootlace Ferrule
UPC	781810483411
UPC 12 Digit	7818104834111

Dimensions

Dimension - D inch	0.05 in
Dimension - D1 inch	0.04 in
Dimension - D2 inch	0.10 in
Dimension - Length Side A inch	0.63 in
Dimension - Length Side B inch	0.39 in

Conductor Related

Conductor - Copper Solid Size	22 AWG
Conductor - Copper Str Size	22 AWG
Conductor Type	<ul style="list-style-type: none"> • CU C Solid-Size • CU C Str-Size

Certifications and Compliance

Certification - CSA Approved	No
Certification - ETL	No
Certification - UL Recognized	No
Certification - cULus	No
Standards - RoHS Compliance Status	CM
UL Listed	No

Logistics

Minimum Pack Quantity	500
-----------------------	-----

For further technical assistance, please contact us

BURNDY Headquarters
47 East Industrial Park Drive
Manchester, New Hampshire 03109

Customer Service Hours:
8 AM - 8 PM Eastern Monday-Friday
Emergency Service 24-hours/365 Days
Phone: 1-800-346-4175
1-603-647-5299 (International)