

Floor Boxes

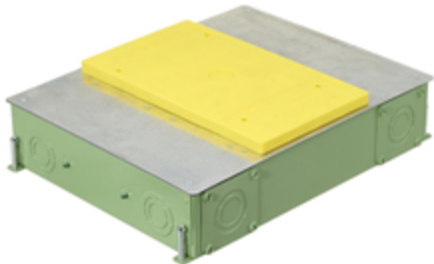
SystemOne ETERNAL™ Series Concrete Floorboxes

4-Gang Recessed



Features

- 3.75" deep wiring chambers for large AV modules and feed-thru capacity
- External High Capacity Feed-Thru Hubs Sold Separately
- Stamped steel construction, exterior coated with fusion bonded epoxy paint for on grade use, ships with Flush Installation Cover & 1/2" Prepour Cover
- Pre and post pour adjustment
- Rectangular cover, patented labor saving easy mount device plates



Ordering Information

Cover Style	Box Type	UPC Number	Catalog Number
Rectangular	On/ Above Grade	783585695303	CFB4G30CRE

Listings

cULus Listed  
UL 514A Listed

Specifications

Box Material	16 gauge galvanized steel
Box Finish	Green corrosion resistant epoxy paint
Top Mousing Plates	16 gauge galvanized steel
Concrete Cover	16 gauge galvanized steel
Device Chamber Grounding	6" Long #12 AWG Solid Copper Wire
Wiring Chamber Depth	3.75"
Wiring Chamber Volumes	(4) 51.0 IN³ [835 CM³]

Related Products

(2) 2"PVC field installed hubs, ships with CFBHUB200PVC	
(2) 1-1/2" reducer, (2) 1-1/4" reducers, and (2) 1" reducers/plugs	
(2) 1-1/4" PVC field installed hubs, ships with CFBHUB125PVC	
with (2) 1" reducers, (2) 3/4" reducers, AND (2) 1/2" reducer/plugs	
2" threaded zinc hub	CFBHUB2
Rectangular pre-pour ½ in. extension caps (2 pack)	24GEXTENDCAP2PK
3-Cubes, Single Circuit	PWFBMP3R

Performance

Mechanical	
Cover Series	24Gxx
Height	3.00"[76.2mm]
Length	14.57" [370.1mm]
Trade Size Knock-Outs: Bottom	(4) ½", ¾", 1", 1¼"
Trade Size Knock-Outs: Ends	(4) ½", ¾", 1", 1¼"
Trade Size Knock-Outs: Sides	(4) ¾", 1", 1¼", 2" (Field installed CFBHUB2 for 2" metallic conduit, CFBHUB200PVC for 2" PVC conduit or CFBHUB125PVC for 1¼" PVC conduit)
Width	11.33" [287.8mm]

Online Resources

Customer Sales Drawings  
eCatalog  
Installation Instructions

