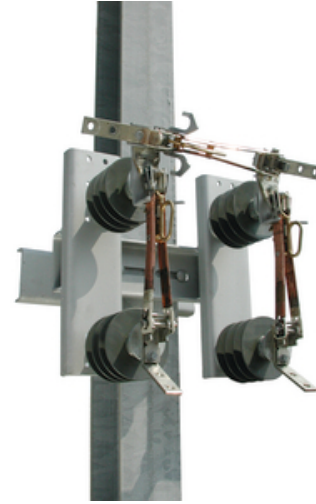




LH Opening, 38kV, 150kV BIL, 600A By-Pass Switch with No Mounting Provisions

By CHANCE Utility
Catalog # [BP3L4P](#)

Lefthand Opening, 34.5kV, 150kV LIW, 600A By-Pass Switch with No Mounting Provisions.



*Representative Image

Features

- Fully Compliant with ANSI/IEEE C37.30.1
- 15, 27 and 38kV ratings
- 110, 125 and 150kV BIL ratings
- 600A and 900A ratings
- ESP Polymer 2.25" Bolt Circle Insulator Assemblies
- Right Hand and Left Hand opening Options
- Non-Angled and Angled Bypass Blade Options
- Cross arm or Pole Mount Options
- 3 Phase on 100" or 124" Cross Arms in Steel or Fiberglass

General

Blade Type	Solid Copper (two blade truss-member)
Cantilever Bending Strength - Routine	800 Lbs (3.56kN)
Color - Insulator	Dark Gray
Contact	Silver
Material - Base	Galvanized Steel per ASTM A153
Tension Range	5000 lb
Torsional Strength	3,000 in Lbs (339 N-M)

Electrical Ratings

Arc Distance - Dry	10" (254mm)
BIL	150 kV
Creep and Leakage Distance	28.2" (716.3mm)
Current Overload - 8hr Emergency	1080 A
Reference Voltage Limit - Minimum	34.5kV
Temperature Rise - Max. at 600A	33° C
Voltage - Maximum	38 kV
Withstand Current - Short Time (1 sec)	25kA, symmetrical
Withstand Current - Short Time (10 cycles)	65kA peak

Certifications and Compliance

Industry Standard(s)	All Applicable ANSI/IEEE Standards
----------------------	------------------------------------

Logistics

Standard Package	1
------------------	---

Product Assets

- [Catalogs - Hookstick Operated Switches \(CA10230E_14B\)](#)
- [Installation Manuals - BP3 Instructions \(TD10321E Rev. B - 07/2021\)](#)
- [Literature - SF11041E_Type BP3 Switch](#)
- [Sales Drawings - By-Pass 3-Pull Switch \(SA-BP3\)](#)
- [Technical Solutions - CH-BP3L4P-SPEC-EN](#)



A proud member of the Hubbell Family.