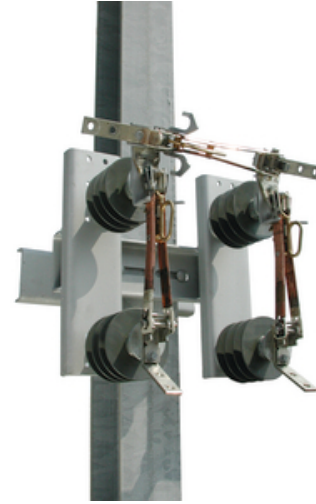




# RH Opening, 38kV, 200kV BIL, 900A Recloser By-Pass Switch with Mounting Back Strap

By CHANCE Utility  
Catalog # [BP3R9B](#)

Righthand Opening, 38kV, 200kV LIW, 900A Recloser By-Pass Switch with Mounting Back Strap.



\*Representative Image

## Features

- Fully Compliant with ANSI/IEEE C37.30.1
- 15, 27 and 38kV ratings
- 110, 125 and 150kV BIL ratings
- 600A and 900A ratings
- ESP Polymer 2.25" Bolt Circle Insulator Assemblies
- Right Hand and Left Hand opening Options
- Non-Angled and Angled Bypass Blade Options
- Cross arm or Pole Mount Options
- 3 Phase on 100" or 124" Cross Arms in Steel or Fiberglass

## General

Blade Type	Solid Copper (two blade truss-member)
Cantilever Bending Strength - Routine	800 Lbs (3.559kN)
Color - Insulator	Dark Gray
Contact	Silver
EU RoHS Indicator	No
Material - Base	Galvanized Steel per ASTM A153
Tension Range	5000 lb
Torsional Strength	3,000 in Lbs (339 N-M)
UPC	096359737193

## Dimensions

Weight	181 lb
--------	--------

## Electrical Ratings

Arc Distance - Dry	15.7"(399mm)
BIL	200 kV
Creep and Leakage Distance	52"(1,320mm)
Current Overload - 8hr Emergency	1080 A
Reference Voltage Limit - Minimum	38kV
Temperature Rise - Max. at 600A	33° C
Voltage - Maximum	38 kV
Withstand Current - Short Time (1 sec)	25kA, symmetrical
Withstand Current - Short Time (10 cycles)	65kA peak

## Certifications and Compliance

Industry Standard(s)	All Applicable ANSI/IEEE Standards
----------------------	------------------------------------

## Logistics

Standard Package	1
------------------	---

## Product Assets

- [Catalogs - Hookstick Operated Switches \(CA10230E\\_14B\)](#)
- [Installation Manuals - BP3 Instructions \(TD10321E Rev. B - 07/2021\)](#)
- [Literature - 38KV 200 KV BIL Three Pull Rescloader Bypass \(SF10329E\)](#)
- [Literature - Hubbell/Chance BP3 Bypass Units Cross Reference \(SF11050E\)](#)
- [Sales Drawings - By-Pass 3-Pull Switch \(SA-BP3\)](#)



A proud member of the Hubbell Family.