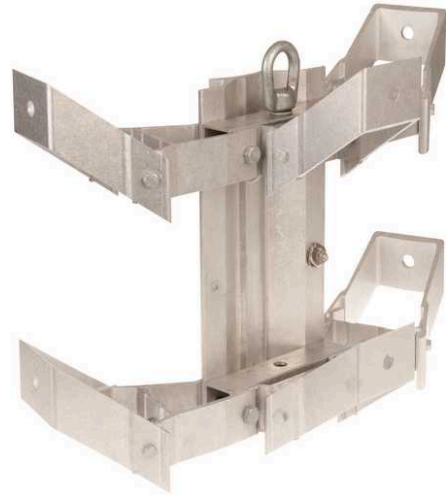




TRANSFORMER BRACKET, 3-POSITION, ALUMINUM RACK STYLE with LIFTING EYE and NEMA A LUG SPACING

By CHANCE Utility
Catalog # [C3MW24MLP](#)

Bracket, Transformer



*Representative Image

Features

- Lightweight 6061-T6 aluminum
- Includes one stainless steel ground lug
- Recommend maximum load ratings based on distance from bracket face to center of gravity of the installed equipment
- 14" = 1,250 lbs. maximum recommended per phase for 3 simultaneous loads
- 18" = 1,000 lbs. maximum recommended per phase for 3 simultaneous loads
- 22" = 820 lbs. maximum recommended per phase for 3 simultaneous loads
- 26" = 700 lbs. maximum recommended per phase for 3 simultaneous loads
- For replacement bolts order six each P2160185P or one kit of six bolts, catalog number PSC2160587

General

Type Bolted Pole Mount Bracket
UPC 096359534525

Dimensions

Distance From Pole N/A

Product Assets

[Catalogs - Aluminum Hardware & Apitong Wood \(5B\)](#)
[Sales Drawings - Transformer Rack Wing \(SA3MW24ML\)](#)



A proud member of the Hubbell Family.

©2023 Hubbell Incorporated. All rights reserved.
CH-C3MW24MLP-SPEC-EN | REV 7/2023