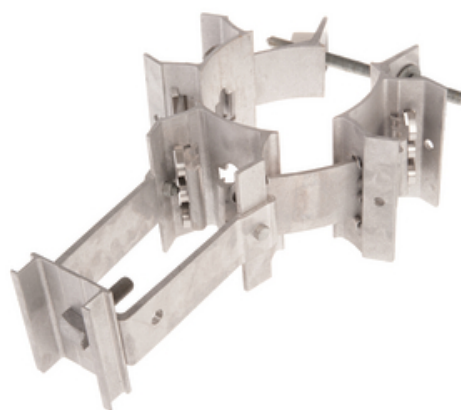




BANDED SINGLE POSITION RECLOSER MOUNTING BRACKET

By Chance
Catalog # [CRSM1](#)

Lightweight aluminum banded bracket support a single recloser on distribution pole.



Features

- Bracket fits pole diameters of 7-3/4" to 12-1/4"
- Pole offset distance is 9"
- Includes 5/8" x 1-3/4" recloser mounting bolt
- Spring retaining clips hold assembly intact before securing on pole
- Band components are 6061-T6 aluminum with ASTM A-153 galvanized steel fasteners

General

Catalog Number	CRSM1
Material	6061-T6 Aluminum
Style	1 Position
Type	Bracket
UPC	096359526452

Dimensions

Distance From Pole	9 in
Weight	17.8 lb

Logistics

Carton Quantity	2
Pallet Quantity	36

Product Assets

[Literature - Banded Recloser Mounting Brackets](#)
[Sales Drawings - Recloser Mount, 1 Position](#)