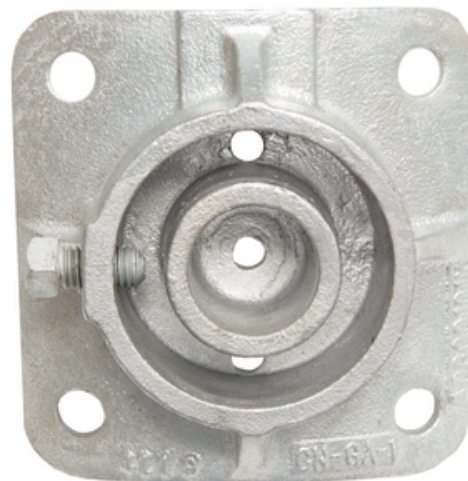




## SIDEWALK STRUT-GUY FITTING for POLE END of 2 and 2-1/2in DIA. PIPE

By Chance  
Catalog # [DG9D1](#)

Fittings used in conjunction with customer supplied pipe to create a strut guy for situations where space limitations do not accommodate standard guying.



### Features

- Four 9/16" dia. pole mounting hole
- Includes 1/2" x 1" set screw
- Cast ductile iron per ASTM A-536 and galvanized per ASTM A-153

### General

Coating	Galvanized, ASTM A-153
Material	Ductile Iron, ASTM A-536
Type	Sidewalk Guy Attachment
UPC	096359478942

### Dimensions

Distance From Pole	N/A
Weight	4.61 lb

### Logistics

Pallet Quantity	288
-----------------	-----

### Product Assets

[Sales Drawings - Guy Wire Pole Plate](#)