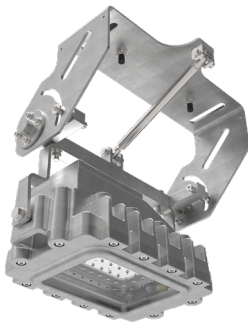
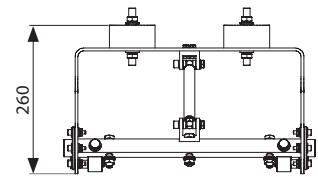
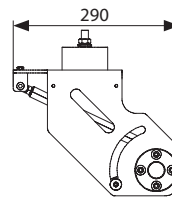
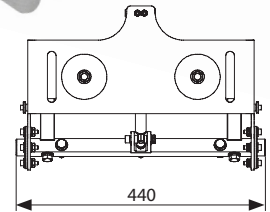
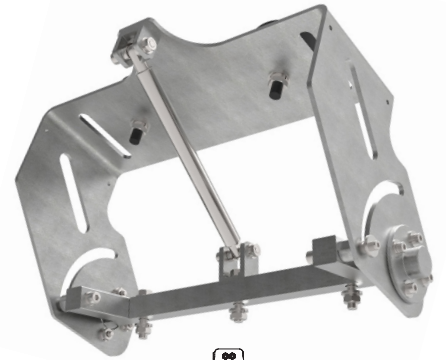


CRANE DAMPER BRACKET

For Zone 1 LED Floodlights

The Crane Damper bracket has been specifically designed to accommodate the Evolution X, ScotiaEx and HDL106N LED floodlights, minimising the vibrations experienced when installed on moving offshore/marine cranes.

The bracket utilises a stainless steel gas filled damper which ensures that your luminaire is always facing down, wherever it is installed along the boom, and provides steady illumination over the desired target area.



SCOTIAEx WITH CRANE DAMPER BRACKET

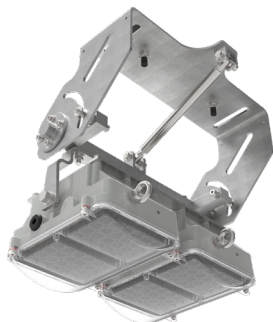
For an Ex d solution, use the ScotiaEx floodlight which is available in outputs from 6000lm upto 12500lm.

Crane Damper Bracket - ScotiaEx		
Weight	Material	Installation
10.5kg	Stainless Steel 316	via anti-vibration mounts

Crane Damper Bracket Assembly - ScotiaEx	SSCO1-000009
--	--------------

Full order code example: SCOD/12L/LE + SSCO1-000009

Please refer to the ScotiaEx datasheet at www.chalmit.com for full luminaire specifications



HDL106N WITH CRANE DAMPER BRACKET

For an Ex e solution, use the twin or triple HDL106N floodlight which is available in a variety of beam distributions up to a maximum output of 19500lm.

Crane Damper Bracket - HDL106N		
Weight	Material	Installation
10.5kg	Stainless Steel 316	via anti-vibration mounts

Crane Damper Bracket Assembly (Twin) - HDL106N	SHDL1-000002
Crane Damper Bracket Assembly (Triple) - HDL106N	SHDL1-000003

Full order code example: HDL106N2HNWV004 + SHDL1-000002

Please refer to the HDL106N datasheet at www.chalmit.com for full luminaire specifications



EVOLUTION X WITH CRANE DAMPER BRACKET

For an Ex d e solution, use the Evolution X floodlight which is available in a variety of beam distributions up to a maximum output of 40000lm.

Crane Damper Bracket - Evolution X		
Weight	Material	Installation
10.5kg	Stainless Steel 316	via anti-vibration mounts

Crane Damper Bracket Assembly - Evolution X	SEVX4-0010
---	------------

Full order code example: EVXB/40L/LE + SEVX4-0010

Please refer to the Evolution X datasheet at www.chalmit.com for full luminaire specifications