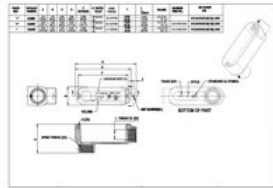




COMBO (RIGID/IMC OR EMT) BODIES AND ASSEMBLIES

Threaded/Set Screw Fittings: LB Body Only
1/2" Combo LB Type Body

C13.1



Catalog #: CLB050

APPLICATIONS

For use with threaded rigid/IMC conduit, or EMT, for pulling access or to split a run into multiple directions.
N/A

PRODUCT FEATURES

Durable die cast aluminum construction
Premium powder coat finish
Combination head screw

CULUS

Listed

NEMA

NEMA 3R Rated

NEC

2014 NEC Compliant

GENERAL PRODUCT INFORMATION

Trade Size: 1/2"
Description Table: 1/2" Combo LB Type Body

PACKAGING

Package Type: Carton
Std. Pkg.: 10
Ship Carton Qty.: 100
Product UPC-A Labeled: Yes
Weight (Lbs. Per/C): 21
Ship Carton Length (in.): 21.26
Ship Carton Width (in.): 11.81
Ship Carton Height (in.): 10.83
Ctn Weight (Lbs.): 23.60
Pallet Qty: 1800
UPC Number: 050169815182
I2of5: 50050169815187