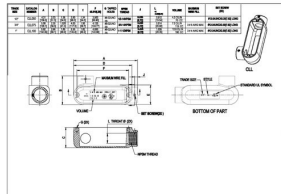




COMBO (RIGID/IMC OR EMT) BODIES AND ASSEMBLIES

Threaded/Set Screw Fittings: LL Body Only
1/2" Combo LL Type Body

C13.1



Catalog #: CLL050

APPLICATIONS

For use with threaded rigid/IMC conduit, or EMT, for pulling access or to split a run into multiple directions.
N/A

PRODUCT FEATURES

- Durable die cast aluminum construction
- Premium powder coat finish
- Combination head screw

CULUS

Listed

NEMA

NEMA 3R Rated

NEC

2014 NEC Compliant

GENERAL PRODUCT INFORMATION

Trade Size: 1/2"
 Description Table: 1/2" Combo LL Type Body

PACKAGING

Package Type: Carton
 Std. Pkg.: 10
 Ship Carton Qty.: 100
 Product UPC-A Labeled: Yes
 Weight (Lbs. Per/C): 24
 Ship Carton Length (in.): 20.87
 Ship Carton Width (in.): 11.81
 Ship Carton Height (in.): 9.84
 Ctn Weight (Lbs.): 28.00
 Pallet Qty: 2400
 UPC Number: 050169815304
 I2of5: 50050169815309