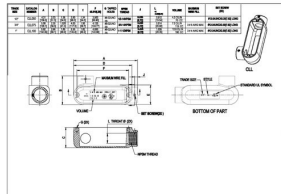




COMBO (RIGID/IMC OR EMT) BODIES AND ASSEMBLIES

Threaded/Set Screw Fittings: LL Body Only
1" Combo LL Type Body

C13.1



Catalog #: CLL100

APPLICATIONS

For use with threaded rigid/IMC conduit, or EMT, for pulling access or to split a run into multiple directions.
N/A

PRODUCT FEATURES

- Durable die cast aluminum construction
- Premium powder coat finish
- Combination head screw

CULUS

Listed

NEMA

NEMA 3R Rated

NEC

2014 NEC Compliant

GENERAL PRODUCT INFORMATION

Trade Size: 1"
 Description Table: 1" Combo LL Type Body

PACKAGING

Package Type: Carton
 Std. Pkg.: 5
 Ship Carton Qty.: 25
 Product UPC-A Labeled: Yes
 Weight (Lbs. Per/C): 42
 Ship Carton Length (in.): 16.34
 Ship Carton Width (in.): 13.19
 Ship Carton Height (in.): 7.48
 Ctn Weight (Lbs.): 13.23
 Pallet Qty: 1000
 UPC Number: 050169815328
 I2of5: 50050169815323