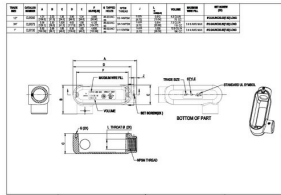




COMBO (RIGID/IMC OR EMT) BODIES AND ASSEMBLIES

Threaded/Set Screw Fittings: LR Body Only
3/4" Combo LR Type Body

C13.1



Catalog #: CLR075

APPLICATIONS

For use with threaded rigid/IMC conduit, or EMT, for pulling access or to split a run into multiple directions.
N/A

PRODUCT FEATURES

Durable die cast aluminum construction
Premium powder coat finish
Combination head screw

CULUS

Listed

NEMA

NEMA 3R Rated

NEC

2014 NEC Compliant

GENERAL PRODUCT INFORMATION

Trade Size: 3/4"
Description Table: 3/4" Combo LR Type Body

PACKAGING

Package Type: Carton
Std. Pkg.: 10
Ship Carton Qty.: 50
Product UPC-A Labeled: Yes
Weight (Lbs. Per/C): 28
Ship Carton Length (in.): 18.11
Ship Carton Width (in.): 11.02
Ship Carton Height (in.): 7.68
Ctn Weight (Lbs.): 17.42
Pallet Qty: 1600
UPC Number: 050169815434
I2of5: 50050169815439