

Aluminum Lay-in Lug, 1/0-14 AWG, 0.27" Stud Size, Tin Plated.

By Connector Mfg. Co. (CMC)

Catalog # [LI-112S](#)

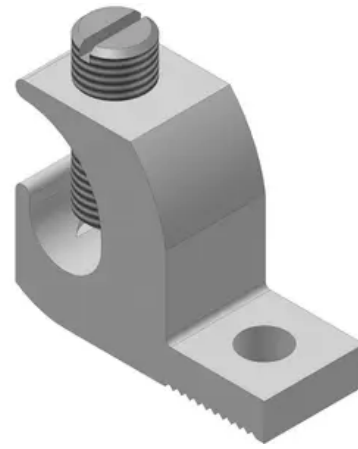
Aluminum Lay-in Lug, 1/0-14 AWG, 0.27" Stud Size. Lay-in mechanical connectors have terminals where cables lay and attach with a setscrew. Also known as lay-in lugs, they're used to transfer and run power or ground connections. Their tongues have mounting holes that secure onto flat surfaces and rod-shaped connection points with bolts and nuts.

Features

- Tin Plated
- Manufactured from high strength 6061-T6 aluminum alloy to insure both maximum strength and conductivity
- Dual rated for both copper and aluminum conductors
- Electro tin plated to provide low contact resistance and protection against corrosion
- Designed for use on conduit grounding bushings
- Open-faced design allows the installer to quickly lay-in the grounding conductor as a jumper to multiple conduits with no break in the ground conductor
- 90° C Rated (486B Listed)
- UL listed and CSA certified

General

Catalog Number LI-112S



Material	Aluminum
UPC	192663017935

Dimensions

Dimensions	1.5 in x 0.6 in x 1.17 in
Height	1.17 in
Length	1.5 in
Width	0.6 in

Conductor Related

Conductor - Copper Str Size Range	1/0-14 AWG
-----------------------------------	------------

Product Assets

[Sales Drawings - C00494026-S](#)
[Specifications - LI-112S](#)