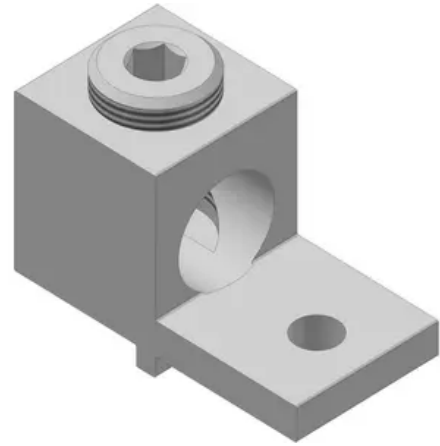


LA-2/OR Anti-Turn Single Conductor Aluminum Mechanical Lugs

By Connector Manufacturing (CMC)
Catalog # [LA-2/OR](#)



Dual Rated Solderless Connector, wire range 2/0 AWG -14 AWG.
TYPE: LA - Anti-Turn Series .CMC® L-shaped single hole solderless connectors are manufactured from high strength 6061-T6 aluminum alloy to insure both maximum strength and conductivity. They are dual rated for both copper and aluminum conductors and are electro tin plated to provide low contact resistance and protection against corrosion. Assembly can be made with only a screwdriver or allen wrench and the connectors are reuseable. 90° C Rated (486B Listed). UL listed and CSA certified.

Features

- CMC L-shaped, single hole, solderless connectors are manufactured from high strength 6061-T6 aluminum alloy to ensure both maximum strength and conductivity.
- Electro tin plated to provide low contact resistance and protection against corrosion.
- Assembly can be made with only a screwdriver or Allen wrench and the connectors are reusable.

General

Catalog Number	LA-2/OR
Material	6061-T6 Aluminum
Type	Bolted Lugs & Terminals
UPC	192663032587

Dimensions

Dimensions	1.2 in x 0.6 in x 0.78 in
Height	0.78 in
Length	1.2 in
Width	0.6 in

Conductor Related

Conductor - Copper Str Size	2/0-14 AWG
Range	
Conductor Range	#2/0 AWG to #14 AWG

Product Assets

[Specifications - LA20R Specification Sheet English](#)
[Specifications - LA-2/OR Specification Sheet French](#)
[Specifications - LA-20R_Specsheet](#)