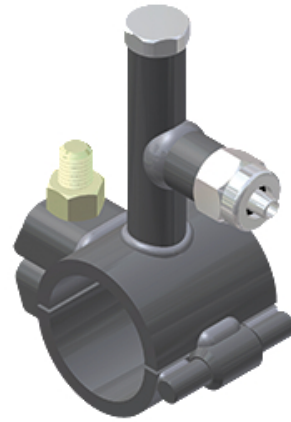




# Steel Service Saddle Punch Tee

By Continental Industries (CI)  
Catalog # 130224101300

SADDLE PUNCH TEE, 6IN IPS MAIN-3/4IN IPS BODY X, 3/4" IPS  
SDR-11 PE COMP, 3/8" CR PUNCH with Compression Outlet



## Features

- WELDS ARE TESTED TO 450 PSI
- PUNCH PROVIDES POSITIVE VALVE ACTION AT MAIN
- FAST - NO BULKY DRILLING EQUIPMENT NEEDED
- SAFE - NO BLOWING OF GAS
- CAN BE FURNISHED WITH ANY TYPE CONTINENTAL OUTLET
- TWO TYPES OF PUNCHES AVAILABLE (SEE PG 20)
- AVAILABLE IN WELD, THREADED OR SADDLE INLETS
- RUGGED ALL STEEL CONSTRUCTION
- FULL WRAP AROUND
- ELASTOMERIC O-RING SEAL
- EXCLUSIVE HINGE CONSTRUCTION
- USES SINGLE ZINC DICHROMATE PLATED NUT AND BOLT
- CAN BE USED FOR KEY HOLE APPLICATIONS

## General

Material Steel

## Product Assets

[Installation Manuals - CONT-Manual-0000-34-6034-90-steel-service-punch-tee](#)

[Installation Manuals - CONT-Manual-0000-34-6034-92-steel-service-punch-tee](#)

[Installation Manuals - CONT-Manual-0000-34-6034-91-steel-service-punch-tee](#)

[Installation Manuals - CONT-Manual-0000-34-6034-93-steel-saddle-service-punch-tee](#)