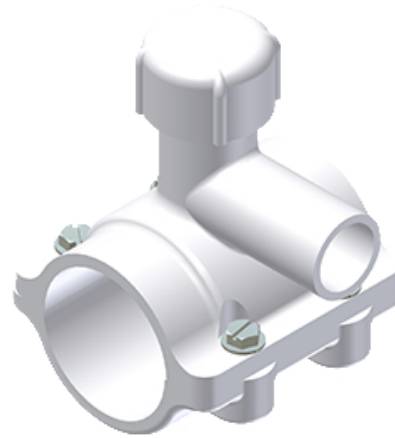




# PVC C-900 FASTTAP® SADDLE PUNCH TEE FOR USE ON C-900 PVC MAINS

By Continental Industries (CI)  
Catalog # [526331071300](#)

PVC C-900 FASTTAP®, 6IN C900 MAIN X 3/4IN IPS SOCKET,  
13/16" CR PUNCH



## Features

- Full wrap around saddle design eliminates stress points being applied to main.
- Tapping process uses simple combination tapping tool eliminating cumbersome tapping machines.
- Tapping cutter retains the coupon then functions as a cut-off valve eliminating corporation stops.
- Manufactured from noncorrosive materials.
- PVC with PPI HDB Listing
- 316 Stainless Steel Bolts
- Brass Cutter
- Available to work with 4"-10" AWWA C-900 size mains.
- Available with 3/4" to 1" PVC, PE, PB or Copper Compression outlets, PVC solvent-weld outlets and threaded adapter outlets.
- Application may be for wet or dry taps.
- See [www.nsf.org](http://www.nsf.org) for Continental's NSF Listing to Standard 61.
- Reduces installation time by 50%.

## General

Material PVC

## Product Assets

[Installation Manuals - CONT-Manual-0000-34-4834-49-fasttap](#)