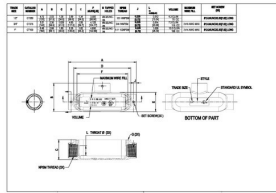




**COMBO (RIGID/IMC OR EMT) BODIES AND ASSEMBLIES**

Threaded/Set Screw Fittings: T Body Only  
3/4" Combo T Type Body

**C13.1**



Catalog #: CT075

**APPLICATIONS**

For use with threaded rigid/IMC conduit, or EMT, for pulling access or to split a run into multiple directions.  
N/A

**PRODUCT FEATURES**

- Durable die cast aluminum construction
- Premium powder coat finish
- Combination head screw

**CULUS**

Listed

**NEMA**

NEMA 3R Rated

**NEC**

2014 NEC Compliant

**GENERAL PRODUCT INFORMATION**

Trade Size: 3/4"  
 Description Table: 3/4" Combo T Type Body

**PACKAGING**

Package Type: Carton  
 Std. Pkg.: 10  
 Ship Carton Qty.: 50  
 Product UPC-A Labeled: Yes  
 Weight (Lbs. Per/C): 31  
 Ship Carton Length (in.): 22.05  
 Ship Carton Width (in.): 12.01  
 Ship Carton Height (in.): 6.50  
 Ctn Weight (Lbs.): 18.30  
 Pallet Qty: 1500  
 UPC Number: 050169815557  
 I2of5: 50050169815552