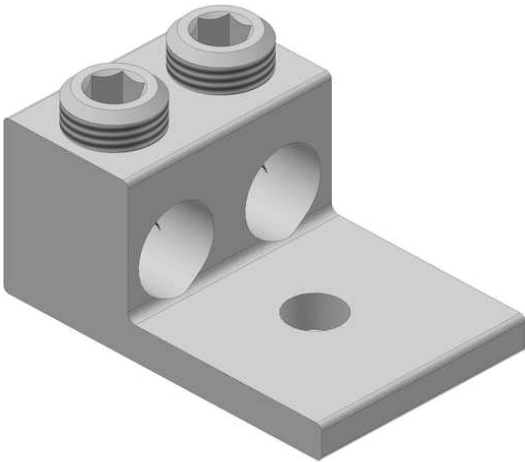


# DLA-125

by CMC  
Catalog ID: DLA-125



- Two-conductor solderless lugs
- Manufactured from high strength 6061-T6 aluminum alloy to ensure both maximum strength and conductivity
  - Assembly can be made with only a screwdriver or Allen wrench
  - Connectors are reusable
  - Electro tin plated to provide low contact resistance

## Product Details

### General

Material	6061-T6 Aluminum
Type	Bolted Lugs & Terminals

### Dimensions

Dimensions	1.47 in x 1.25 in x 0.76 in
Height	0.76 in
Length	1.47 in
Width	1.25 in