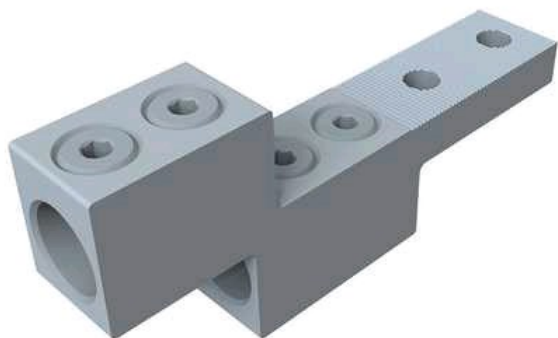


DPV2-1000

by CMC
Catalog ID: DPV2-1000



Heavy-duty transformer connectors, Dual rated connectors for Aluminum or Copper conductors, CO-OX Oxide inhibitor is omitted

- Connector fabricated from 6061-T6 aluminum alloy for conductivity and strength.
- Clear plated for low-contact resistance.
- Supplied with aluminum radial-tipped set-screws.
- All mounting holes 1.75" on center line.
- For installation, CMC® recommends the use of a 9" insulated Allen wrench.
- A torque wrnch should be used to ensure the proper torque is achieved.

Product Details

General

Material	Aluminum Alloy, 6061-T6
Type	Bolted Lugs & Terminals
UPC	192663082599

Dimensions

Width	1.75 in
-------	---------

Electrical Ratings

Voltage Rating	600 V
----------------	-------

Conductor Related

Conductor Range	1000 Kcmil-#1/0 AWG
Number Of Conductors	2